

**MB Production , Globally Living**



# **MB MODULAR HOUSE CATALOG**

WHERE EVERY HOUSE HAS A STORY

# WORLD M B GROUP



## **Better design, better quality, optimum price.**

Since 1980, our company has been manufacturing trailers, axles, and chassis for large vehicles. Starting in 2020, with the vision of becoming a global brand, we began producing both wheeled and non-wheeled mobile homes. Under the MB World Group, we manufacture products such as MB Tiny House, the MB Mirror House (the first and only manufacturer in Turkey), and the MB Modular House, reaching corporate and individual users across three continents under our brand. We have successfully established ourselves as a competitive brand, particularly through our efforts in Europe. Additionally, we conduct research on regulations and market demands in regions such as Europe, America, and the Middle East to ensure our production meets market needs. Our next-generation mobile homes are designed for four-season living and can be used as mobile units for all our users.

### **1. Our Vision**

Our vision is to be the world's leading manufacturer of mobile living spaces. We aim to provide excellent products and services through high-quality and innovative designs.

### **2. Our Mission**

Our mission is to provide users with the most suitable mobile living spaces, ensuring a comfortable and sustainable living experience.

The image shows the interior of a tiny house, fully decorated for Christmas. The room is compact but features a kitchen counter with a sink and a wooden countertop on the left. In the center, there is a grey sofa with red and green cushions and a plaid blanket. A small round table with a book and a drink sits in front of the sofa. To the right, a dining table is set with a green placemat, a centerpiece of pine branches and candles, and a wine glass. A decorated Christmas tree stands in the corner, and a large window with grey curtains offers a view of a snowy forest. The walls are light-colored wood paneling, and the ceiling has recessed lighting. Festive decorations include garlands, stockings, and string lights.

**MB Tiny House , we believe that dreams shouldn't be limited by square meters.**

**comfort. mobility. style.**



**In your own little world, under the stars and with your loved ones...**

**Isn't this exactly the peace you've been dreaming of?**

# CONTENTS

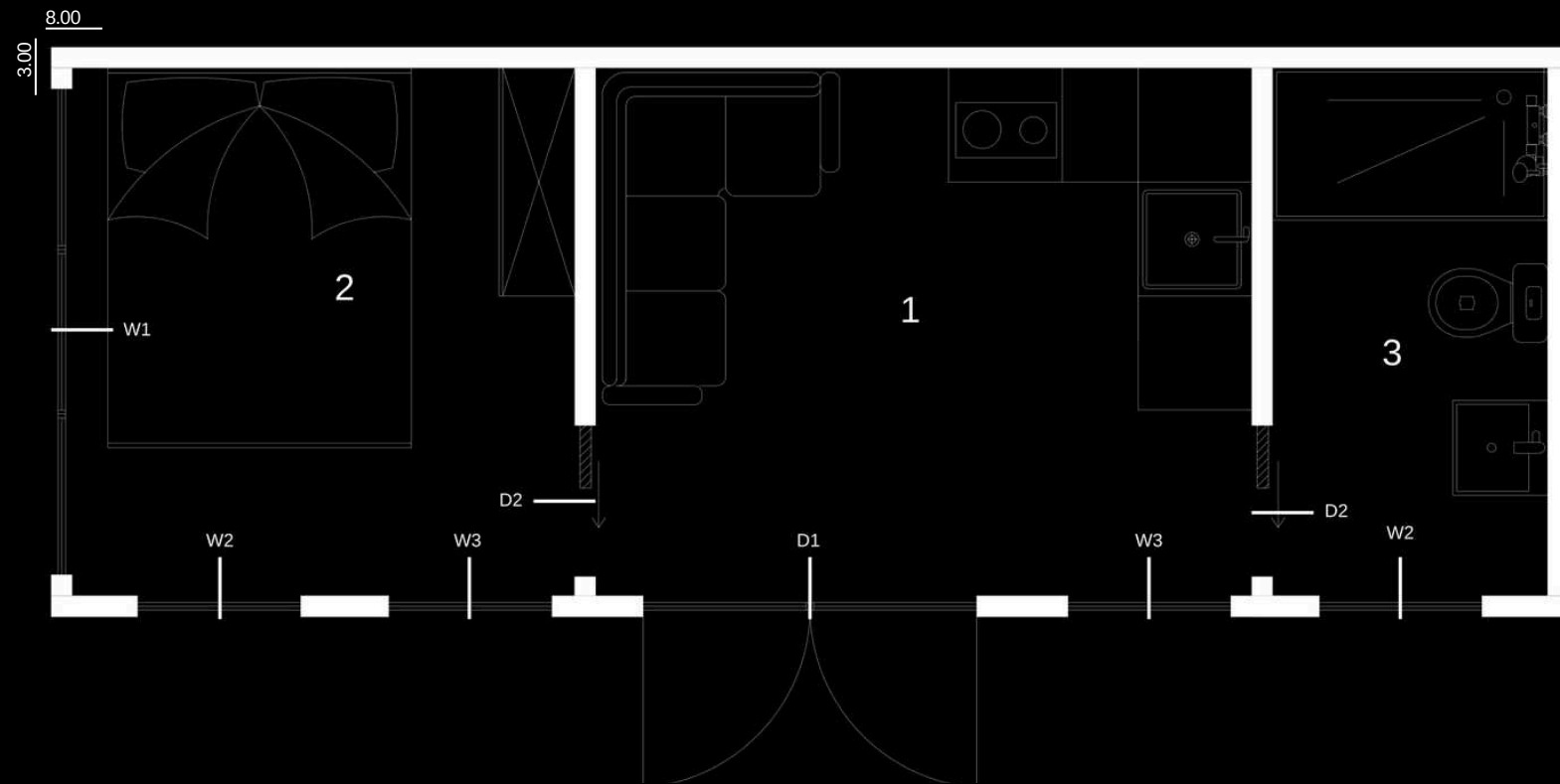
■	MB 24	MODULAR HOUSE
■	MB 26	MODULAR HOUSE
■	MB 28	MODULAR HOUSE
■	MB 33	MODULAR HOUSE
■	MB 41	MODULAR HOUSE
■	MB 42	MODULAR HOUSE
■	MB 48	MODULAR HOUSE
■	MB 49	MODULAR HOUSE
■	MB 51	MODULAR HOUSE
■	MB 60	MODULAR HOUSE
■	MB 60-2	MODULAR HOUSE
■	MB 70	MODULAR HOUSE
■	MB 70-2	MODULAR HOUSE
■	MB 85	MODULAR HOUSE
■	MB 98	MODULAR HOUSE

MB 104	MODULAR HOUSE	■
MB 135	MODULAR HOUSE	■
MB 140	MODULAR HOUSE	■
MB 192	MODULAR HOUSE	■
MB 195	MODULAR HOUSE	■



**MB 24**

# MB 24



<b>Total</b>	<b>24 m<sup>2</sup></b>
1 Living room	9.6 m <sup>2</sup>
Kitchen	
2 Bedroom	7.3 m <sup>2</sup>
3 Bathroom	4 m <sup>2</sup>
<b>Doors</b>	<b>height/width</b>
D1	190/180
D2	190/80
D3	190/80
<b>Windows</b>	
W1	190/260
W2	100/90
W3	190/90

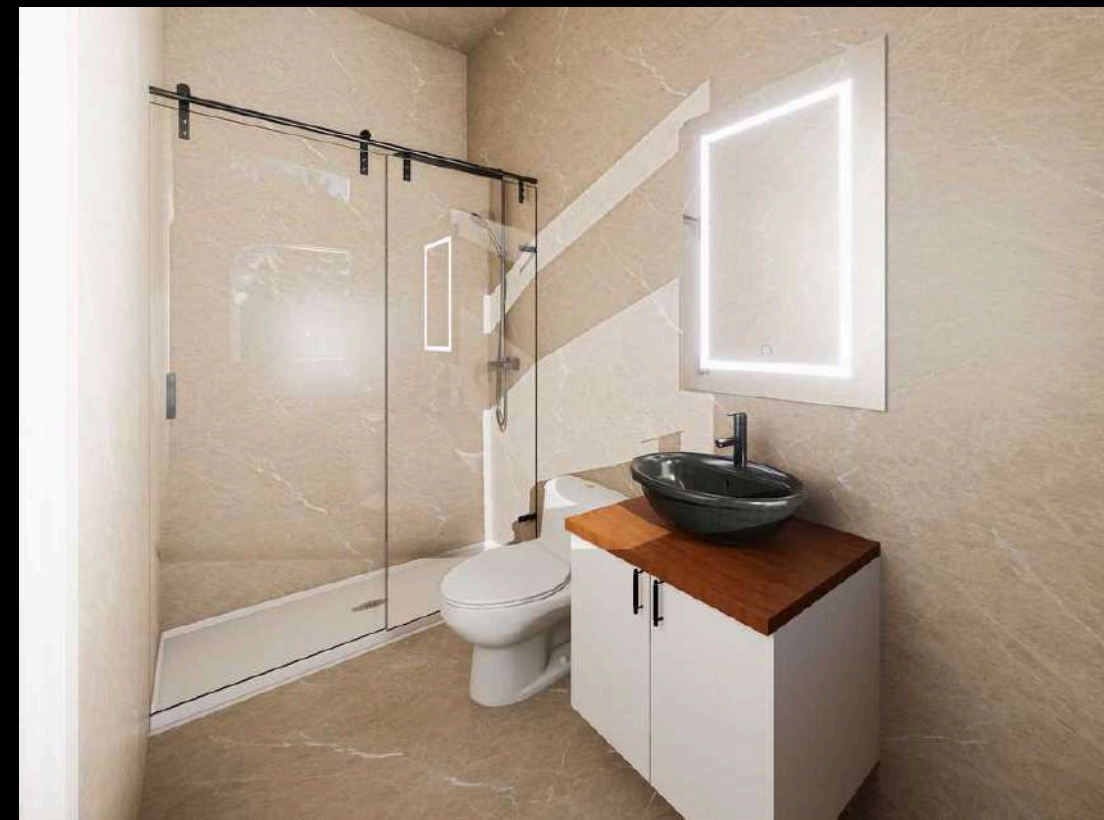


**MB 24**



# FUNCTIONALITY

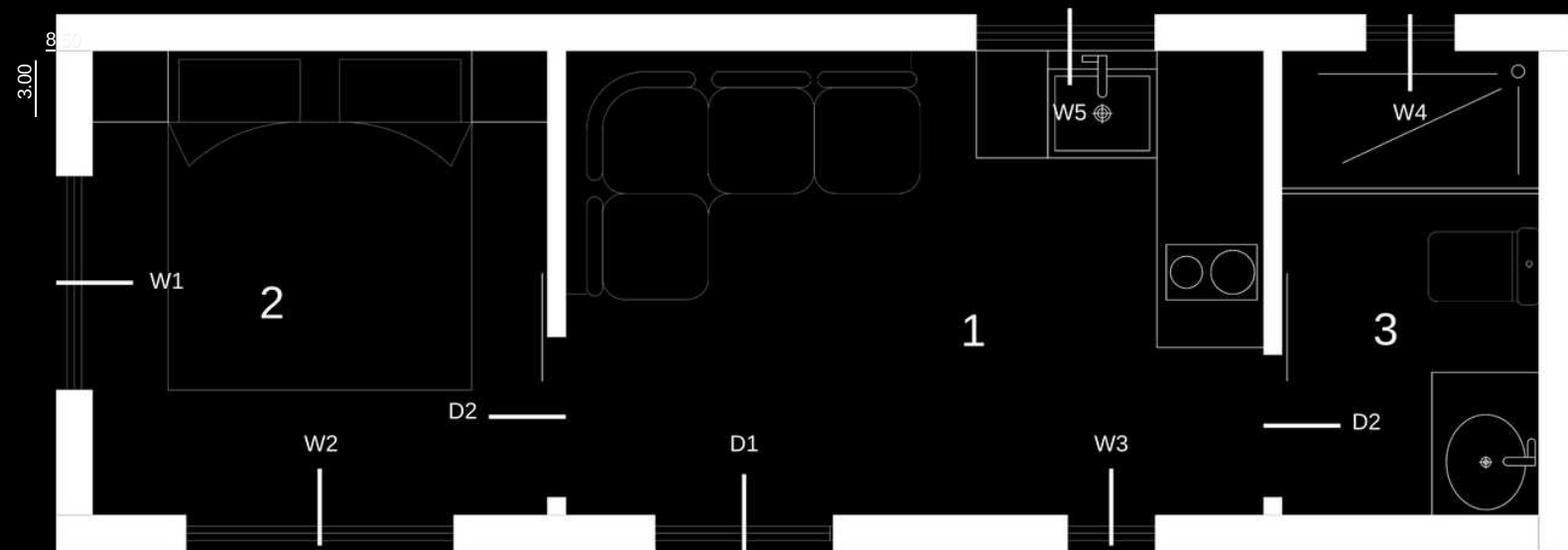
MB Modular House 24, This modern MB Modular home seamlessly merges minimalism with comfort. The layout features a spacious and restful bedroom area, which flows into a comfortable living and mini-kitchen space, while the cleverly designed, stylish, and fully equipped bathroom is located on the right side of the unit. With every square inch utilized efficiently, this module offers both an aesthetic and functional living experience, making it the ideal turnkey solution for those seeking a complete and efficient living space.





**MB 26**

# MB 26



**Total** 26 m<sup>2</sup>

1 Living room 10 m<sup>2</sup>

Kitchen

2 Bedroom 6.6 m<sup>2</sup>

3 Bathroom 3.7 m<sup>2</sup>

**Doors** height/width

D1 200/100

D2 200/90

D3 200/90

**Windows**

W1 175/120

W2 150/150

W3 200/50

W4 50/50

W5 60/100



**MB 26**



**COMPACT**

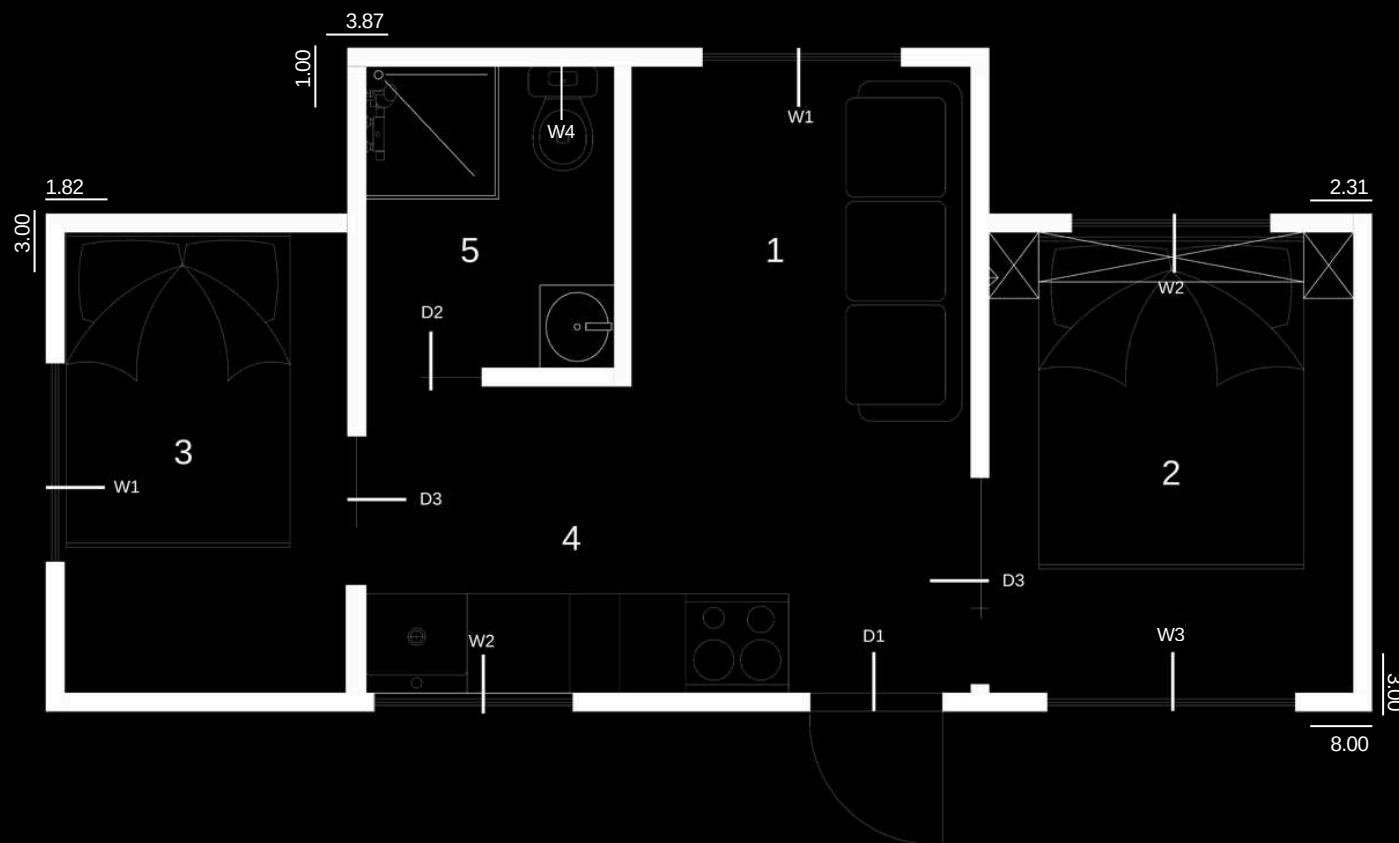
MB Modular House 26, Our home stands out with its smart layout. The fluid interior design seamlessly integrates the spacious bedroom section, reserved for rest, with the functional living area and mini-kitchen. The elegant and modern bathroom, essential for your comfort, is strategically positioned at the very end of the unit. Offering a sense of openness despite its compact size, this module provides a complete solution for those seeking both aesthetic appeal and practical living.





**MB 28**

# MB 28



**Total** 28 m<sup>2</sup>

1 Living room 6 m<sup>2</sup>

2 Bedroom 6.1 m<sup>2</sup>

3 Bedroom 4.7 m<sup>2</sup>

4 Kitchen 4.7 m<sup>2</sup>

5 Bathroom 2.7 m<sup>2</sup>

**Doors** height/width

D1 200/120

D2 200/70

D3 200/80

**Windows**

W1 90/120

W2 50/120

W3 150/150

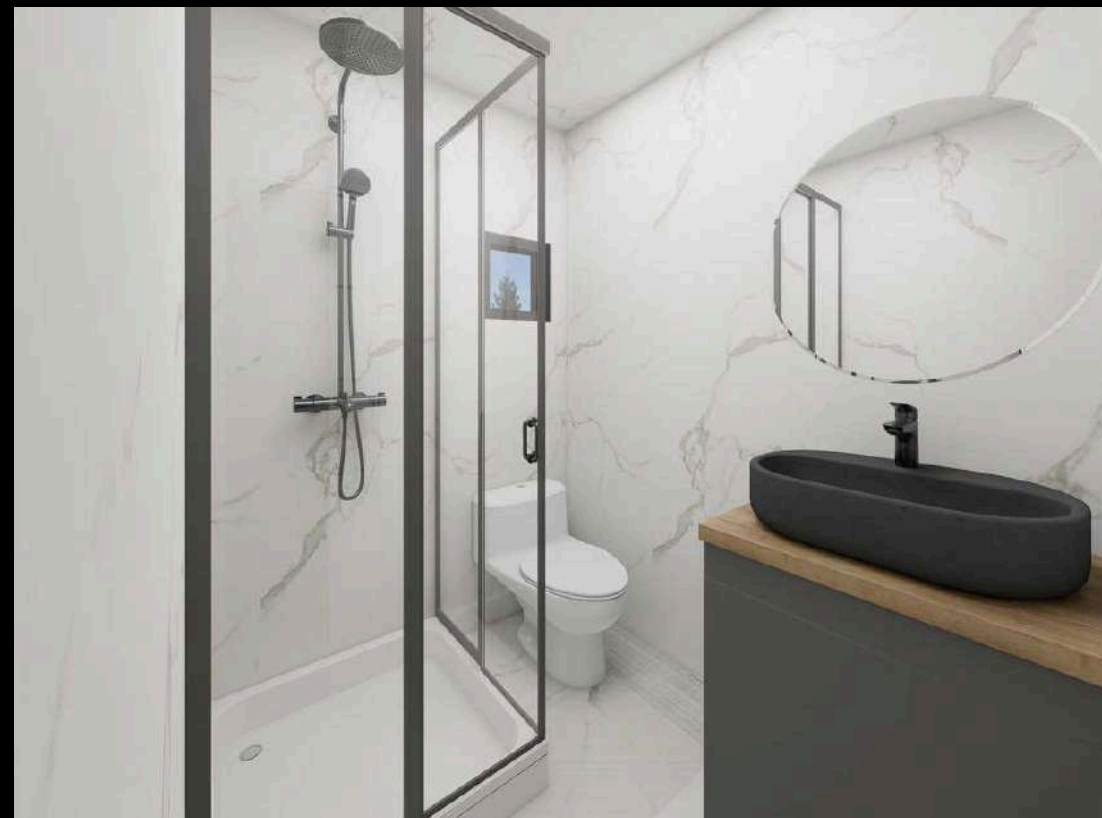
W4 50/50



**MB 28**

**PRIVACY**

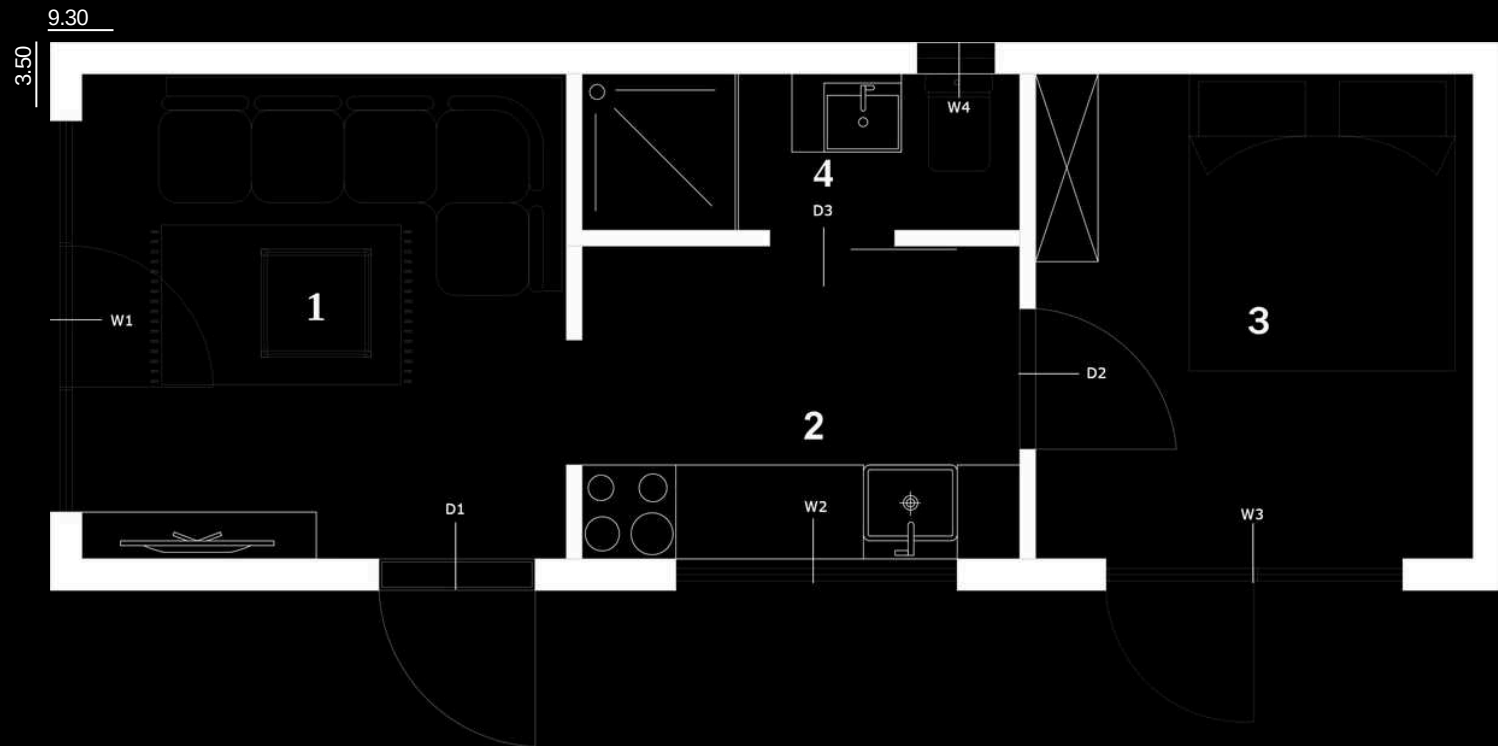
MB Modular House 28, This intelligently designed MB Modular House combines luxury and privacy within a compact structure. The layout features two private bedrooms positioned at opposite ends of the home, efficiently connecting them with a centrally located, stylish bathroom, mini-kitchen, and living area. Utilizing every square meter intelligently, this module provides a complete, turn-key solution, offering all the advantages of comfort, functionality, and two-bedroom living, even in a small footprint.





**MB 33**

# MB 33



<b>Total</b>	<b>33 m<sup>2</sup></b>
1 Living room	9.5 m <sup>2</sup>
2 Kitchen	5.5 m <sup>2</sup>
3 Bedroom	8.5 m <sup>2</sup>
4 Bathroom	2.8 m <sup>2</sup>
<b>Doors</b>	<b>height/width</b>
D1	200/100
D2	200/90
D3	200/80
<b>Windows</b>	
W1	280/250
W2	60/180
W3	200/180
W4	50/50



**MB 33**



**STYLISH**

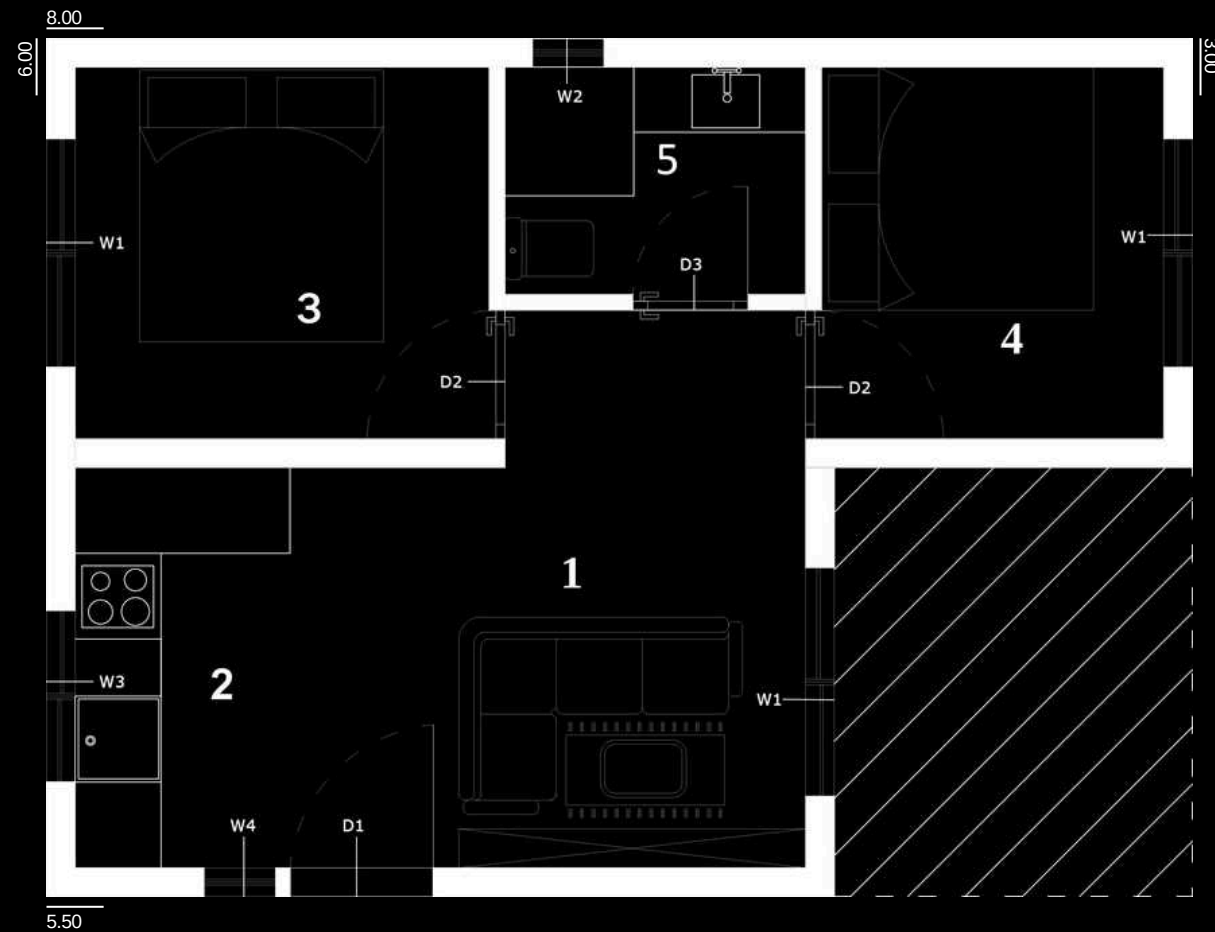
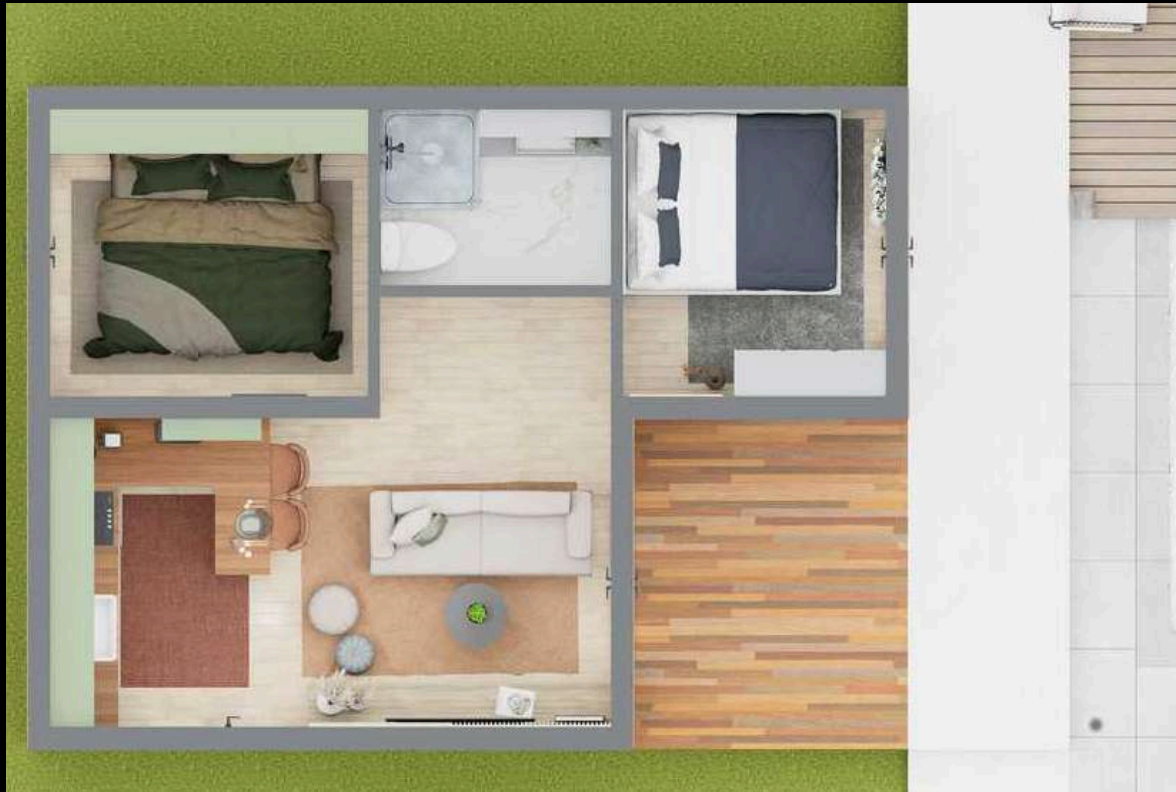
MB Modular House 33, This exclusive MB Modular House unit maximizes spaciousness with its open-plan living area, brightly illuminated by natural light streaming through large windows. The fully equipped modern kitchen and comfortable living area offer a seamless flow that forms the heart of the home. Located on the right side, the peaceful bedroom and adjacent stylish bathroom ensure complete privacy and comfort. Combining aesthetics, functionality, and spaciousness, this module is a turn-key solution for those seeking a stylish life.



**MB 41**



# MB 41



<b>Total</b>	<b>41 m<sup>2</sup></b>
1 Living room	8.5 m <sup>2</sup>
2 Kitchen	7 m <sup>2</sup>
3 Bedroom	7.5 m <sup>2</sup>
4 Bedroom	6.2 m <sup>2</sup>
5 Bathroom	3.3 m <sup>2</sup>
Hallway	2.3 m <sup>2</sup>
<b>Doors</b>	<b>height/width</b>
D1	200/100
D2	200/90
D3	200/80
<b>Windows</b>	
W1	200/160
W2	50/50
W3	60/120
W4	200/50



**MB 41**

**UNIQUE**

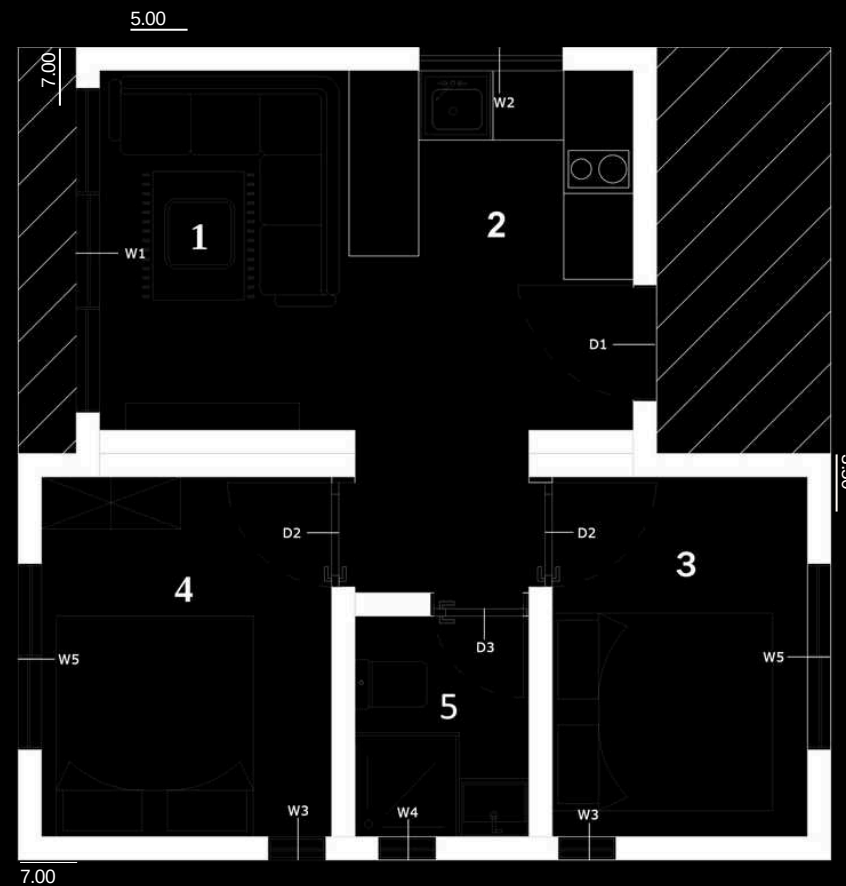
MB Modular House 41, Discover this unique design that redefines modern and compact living! The intelligently planned, open-concept living area seamlessly transitions to a spacious wooden veranda, offering a bright atmosphere in touch with nature. With two private bedrooms and a stylish bathroom, this home is more than just a residence; it's an inspiring lifestyle that blends functionality with aesthetics, promising maximum happiness and style in a compact space.





**MB 42**

# MB 42



**Total** 42 m<sup>2</sup>

1 Living room 7 m<sup>2</sup>

2 Kitchen 7.5 m<sup>2</sup>

3 Bedroom 7 m<sup>2</sup>

4 Bedroom 7.5 m<sup>2</sup>

5 Bathroom 3 m<sup>2</sup>

Hallway 2 m<sup>2</sup>

**Doors** height/width

D1 200/100

D2 200/90

D3 200/80

**Windows**

W1 200/280

W2 60/120

W3 200/50

W4 50/50

W5 200/160

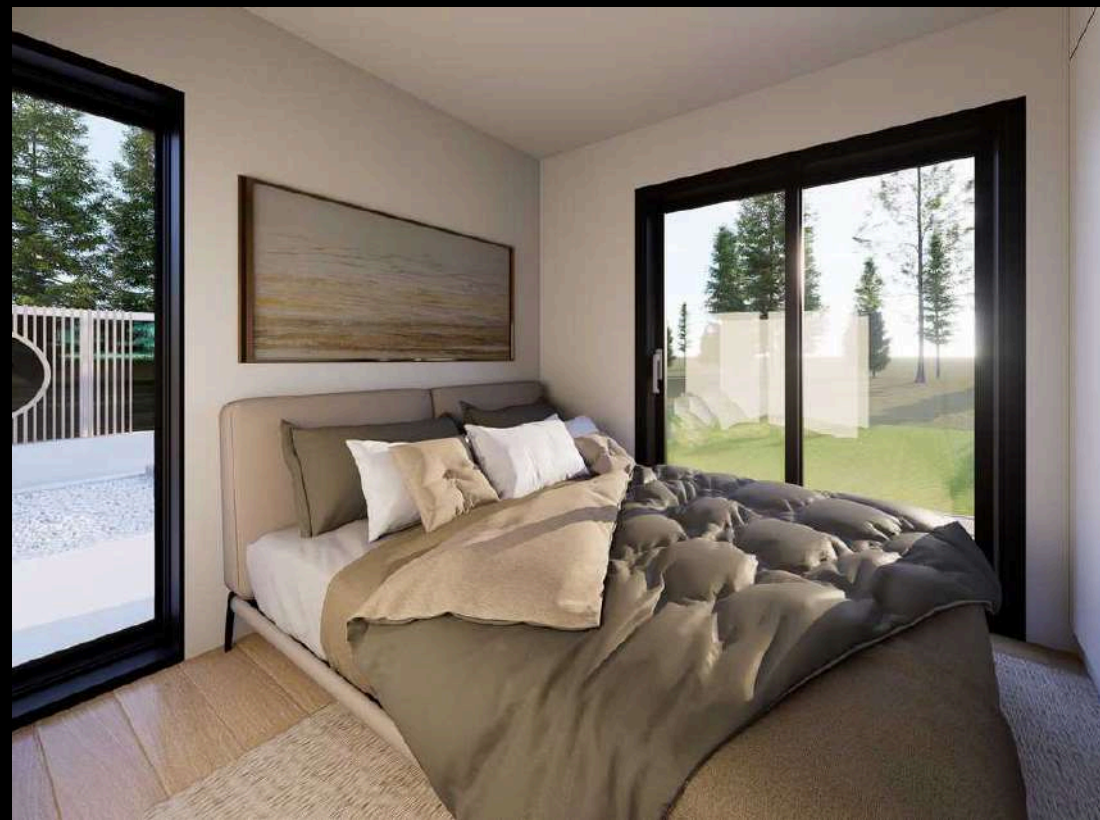


**MB 42**



# AESTHETICS

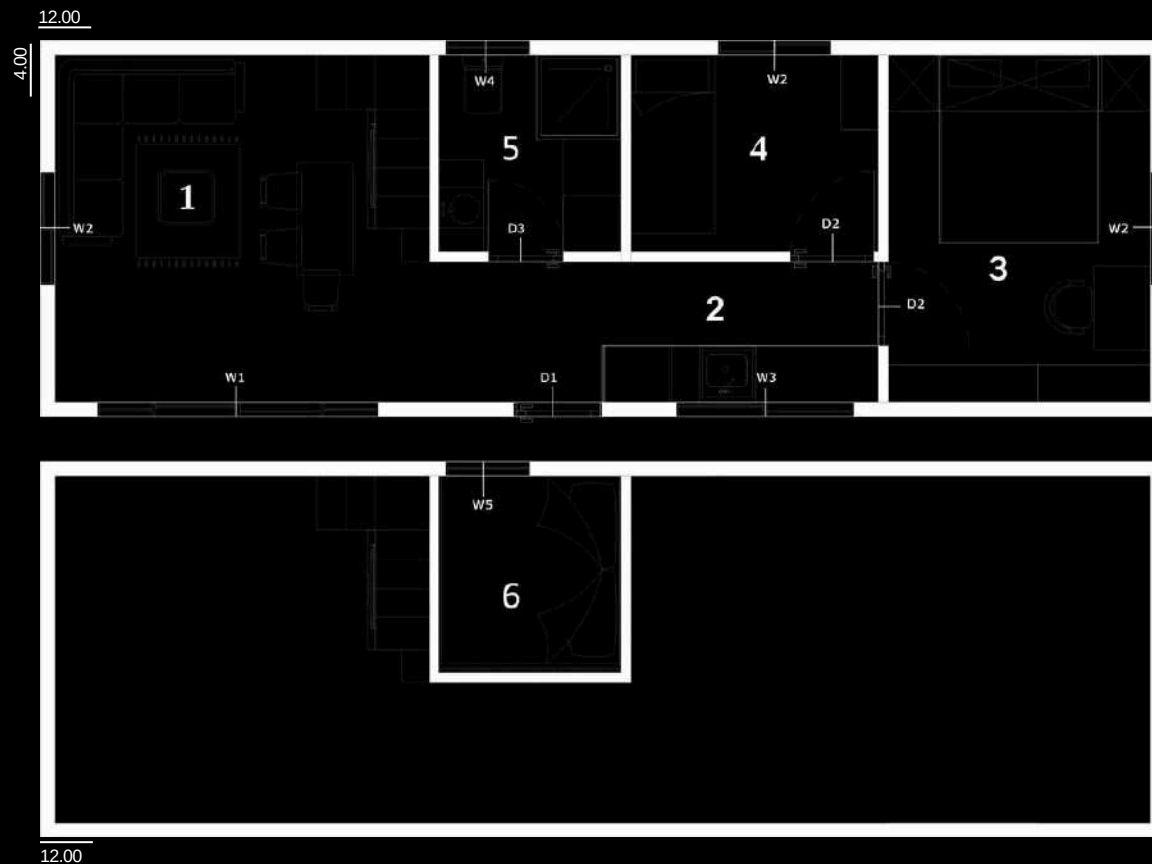
MB Modular House 42, Bringing together functionality and modern aesthetics, this compact home integrates its open-concept living space with a large wooden veranda that connects you with nature. Offering privacy, one of the two bedrooms opens directly to the outdoors, creating a personal area of freedom, while the centrally located bathroom ensures practical use. This design is the perfect choice for those seeking a stylish, practical, and nature-connected lifestyle.





**MB 48**

# MB 48



<b>Total</b>	<b>48 m<sup>2</sup></b>
1 Living room	15 m <sup>2</sup>
2 Kitchen	7 m <sup>2</sup>
3 Bedroom	10.5 m <sup>2</sup>
4 Bedroom	5.5 m <sup>2</sup>
5 Bathroom	4 m <sup>2</sup>
Loft	4 m <sup>2</sup>

## Doors height/width

D1	200/90
D2	200/90
D3	200/80

## Windows

W1	200/300
W2	90/120
W3	60/190
W4	50/90
W5	50/120



**MB 48**



**INNOVATIVE**

MB Modular House 48, This innovative home connects its spacious, sunlit living room to a magnificent full-length terrace through large sliding windows. It offers luxury in its private quarters with a large master bedroom designed for your comfort and a stylishly designed spacious bathroom, while delivering a unique outdoor living experience with its expansive deck. This is the perfect choice for those seeking modern aesthetics and maximum comfort.

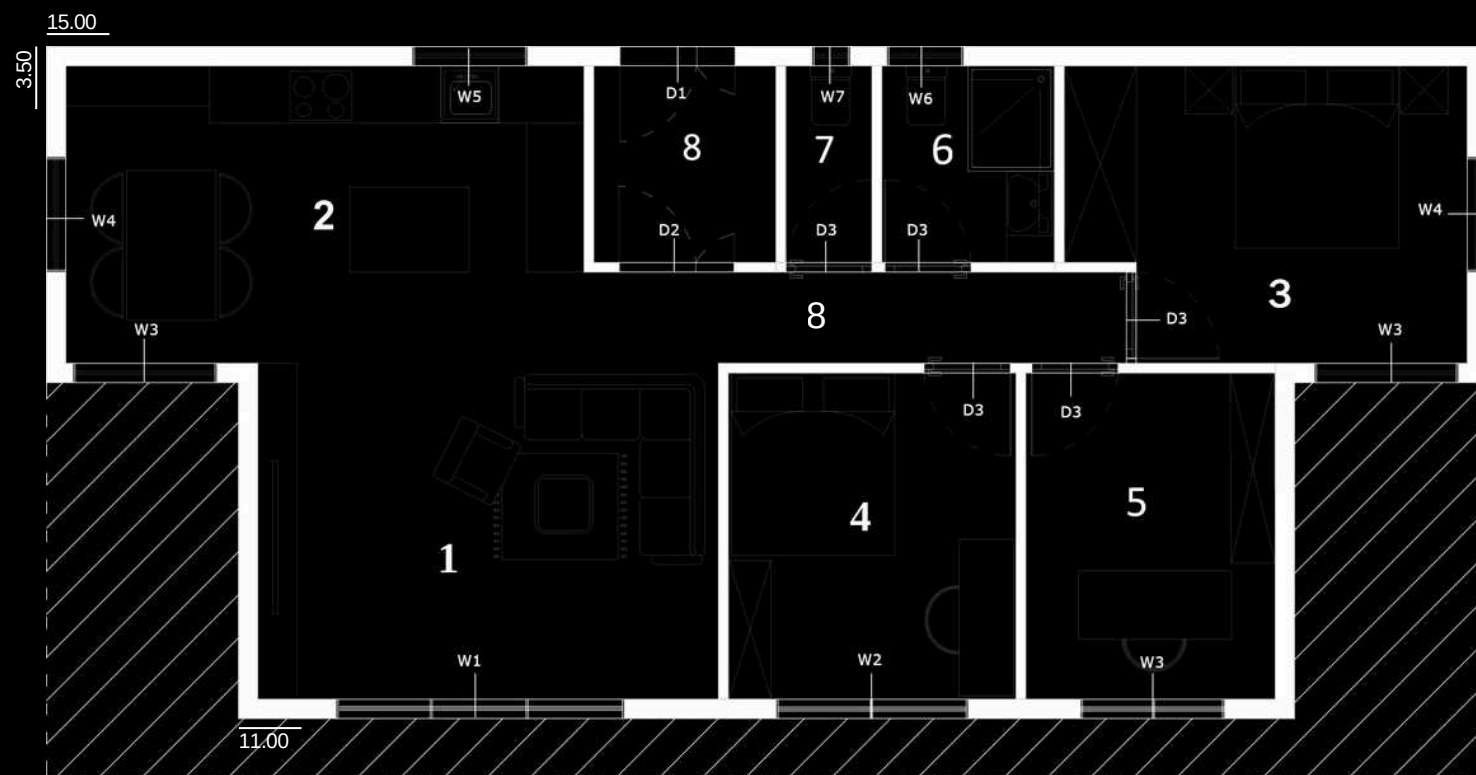






**MB 49**

# MB 49



<b>Total</b>	<b>49</b>	<b>m<sup>2</sup></b>
1 Living room	17	m <sup>2</sup>
2 Kitchen	16.7	m <sup>2</sup>
3 Bedroom	12	m <sup>2</sup>
4 Bedroom	10	m <sup>2</sup>
5 Office	9	m <sup>2</sup>
6 Bathroom	3.7	m <sup>2</sup>
7 WC	1.8	m <sup>2</sup>
8 Hallway	9	m <sup>2</sup>

## Doors height/width

D1	200/120
D2	200/120
D3	200/90

## Windows

W1	200/300
W2	200/200
W3	200/150
W4	90/120
W5	50/120
W6	90/90
W7	40/40



**MB 49**



**MODERNITY**

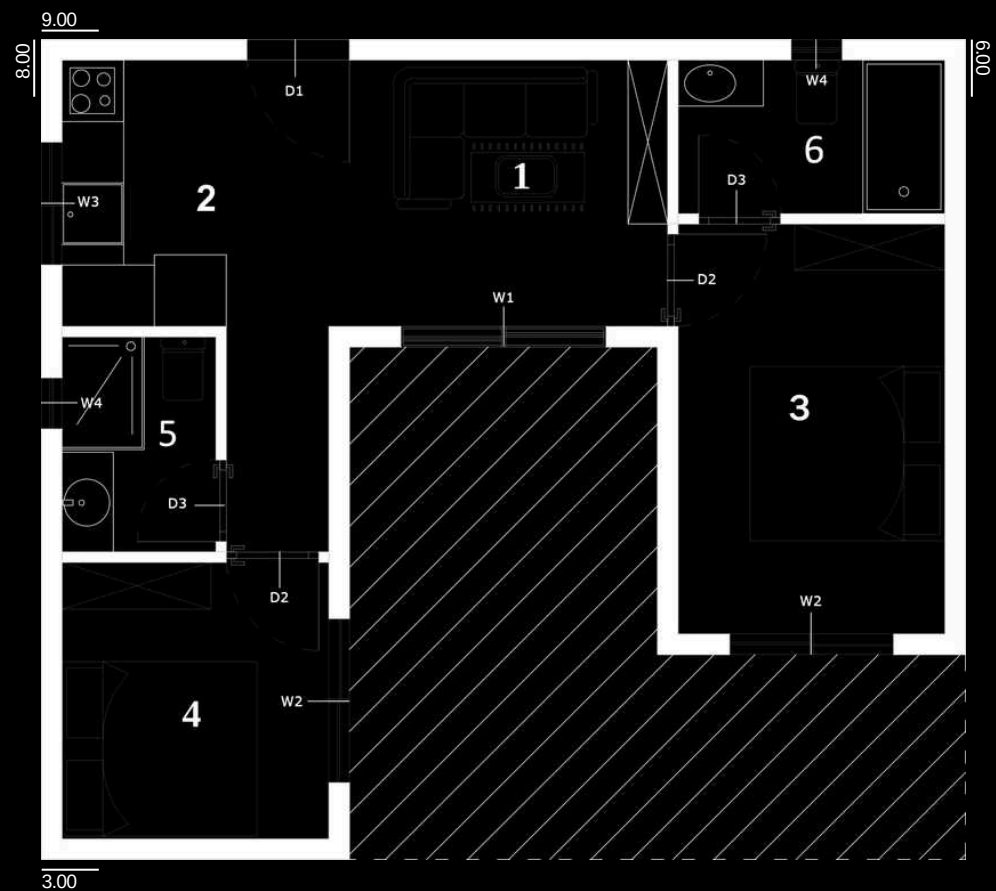
MB Modular House 49, Redefining modern luxury, this design seamlessly integrates a spacious and flowing living area with its stylish open kitchen. In addition to two bedrooms, another room offers a versatile home-office solution that adapts to today's dynamics, while two separate bathrooms promise maximum comfort and practicality. Perfectly blending indoor and outdoor living, this home is the ideal choice for those seeking both style and spaciousness for social gatherings and private moments alike.



**MB 51**



# MB 51



**Total** 51 m<sup>2</sup>

1 Living room 8.5 m<sup>2</sup>

2 Kitchen 7 m<sup>2</sup>

3 Bedroom 10.5 m<sup>2</sup>

4 Bedroom 7 m<sup>2</sup>

5 Bathroom 3 m<sup>2</sup>

6 En-suite Bath 4 m<sup>2</sup>

Hallway 2 m<sup>2</sup>

**Doors** height/width

D1 200/100

D2 200/90

D3 200/80

**Windows**

W1 200/200

W2 200/160

W3 60/120

W4 50/50



**MB 51**



**PRIVATE**

MB Modular House 51, Centered around a stylish inner terrace, this unique design redefines privacy. While offering absolute comfort with two private bedrooms and two separate bathrooms located on opposite wings of the home, it seamlessly integrates the living spaces with the veranda. Blurring the lines between indoors and outdoors, this home is the perfect choice for those seeking both an architectural masterpiece and a personal sanctuary.





**MB 60**

# MB 60



**Total** 60 m<sup>2</sup>

1 Living room 17 m<sup>2</sup>

2 Kitchen 4 m<sup>2</sup>

3 Bedroom 12.7 m<sup>2</sup>

4 Bedroom 11 m<sup>2</sup>

5 Bathroom 3.7 m<sup>2</sup>

6 En-suite Bath 2.3 m<sup>2</sup>

**Doors** height/width

D1 200/300

D2 200/90

D3 200/80

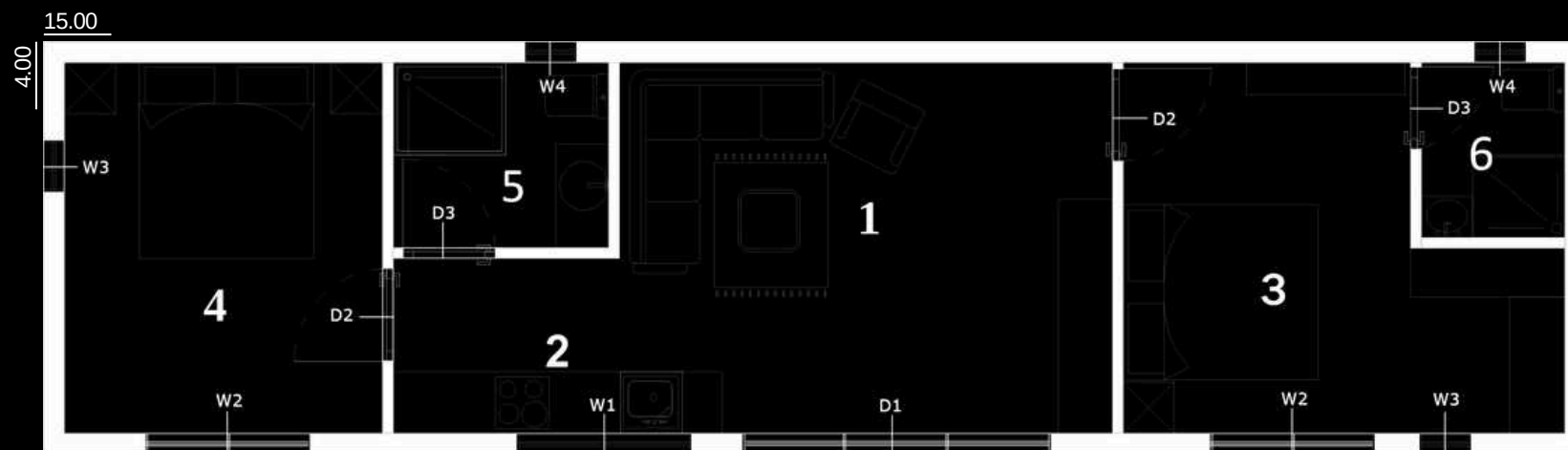
**Windows**

W1 50/170

W2 200/160

W3 50/150

W4 50/50



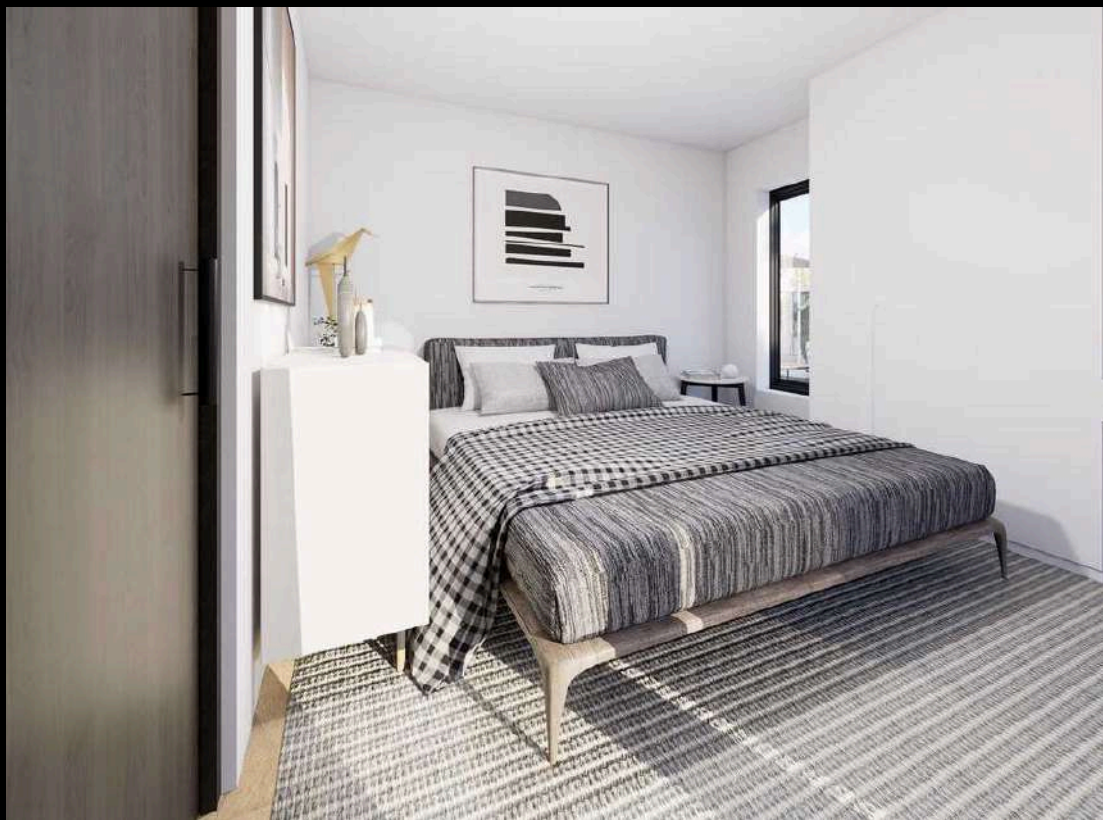


**MB 60**



**NATURE**

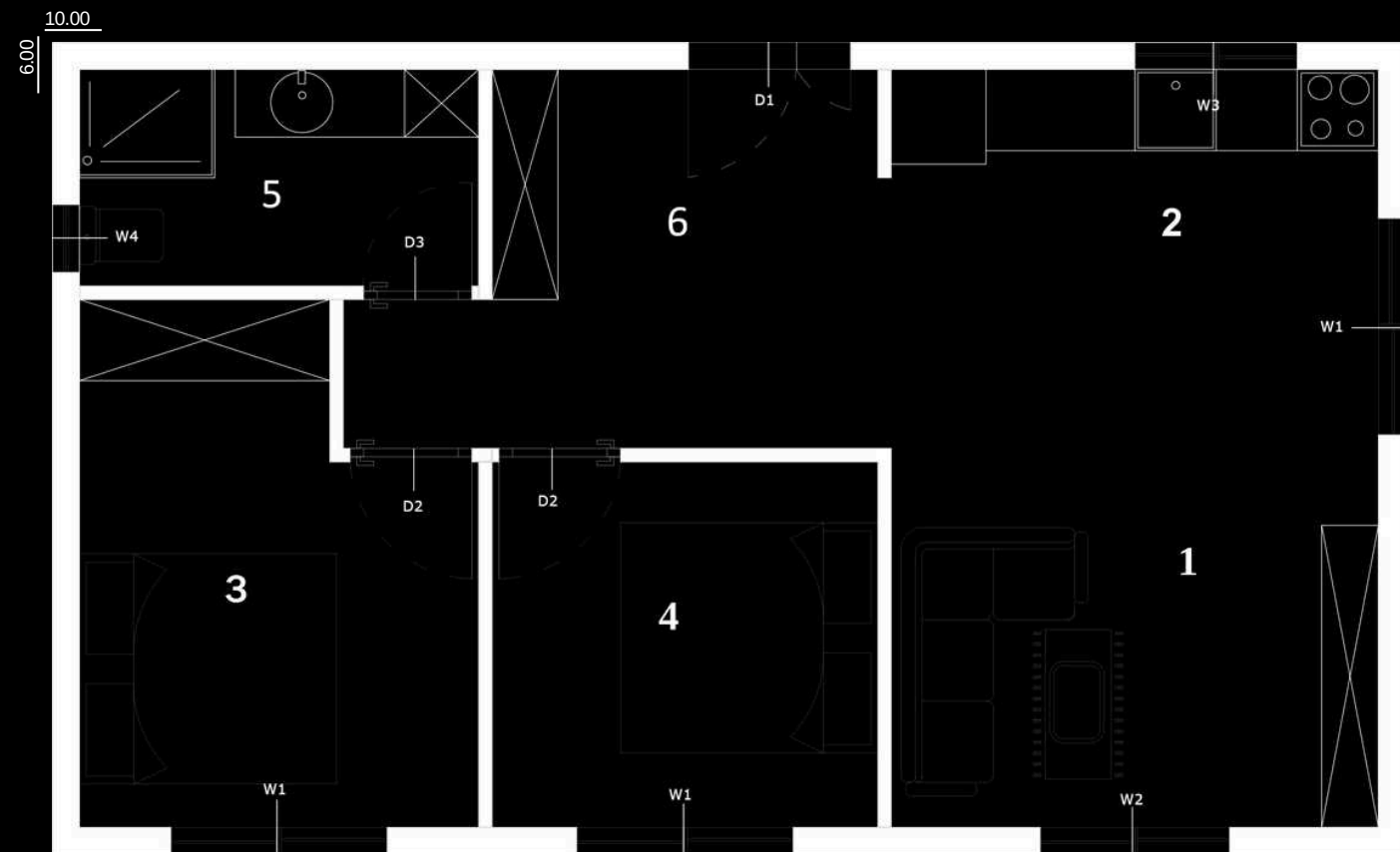
MB Modular House 60, Step into your own private resort, where you can live the vacation of a lifetime every day! This extraordinary linear design redefines luxury and privacy. While the central living area and kitchen—the social heart of the home—are designed for creating cherished moments with your loved ones, the real magic begins with the two private bedroom suites located at opposite ends of the home. This isn't just a house; it's the purest expression of luxury, privacy, and modern living in harmony with nature.





**MB 60 - 2**

# MB 60 - 2



<b>Total</b>	<b>60</b>	<b>m<sup>2</sup></b>
1 Living room	10	m <sup>2</sup>
2 Kitchen	10	m <sup>2</sup>
3 Bedroom	10	m <sup>2</sup>
4 Bedroom	7.7	m <sup>2</sup>
5 Bathroom	4.7	m <sup>2</sup>
6 Hallway	9.5	m <sup>2</sup>

## Doors height/width

D1	200/120
D2	200/90
D3	200/80

## Windows

W1	200/160
W2	150/140
W3	60/120
W4	50/50

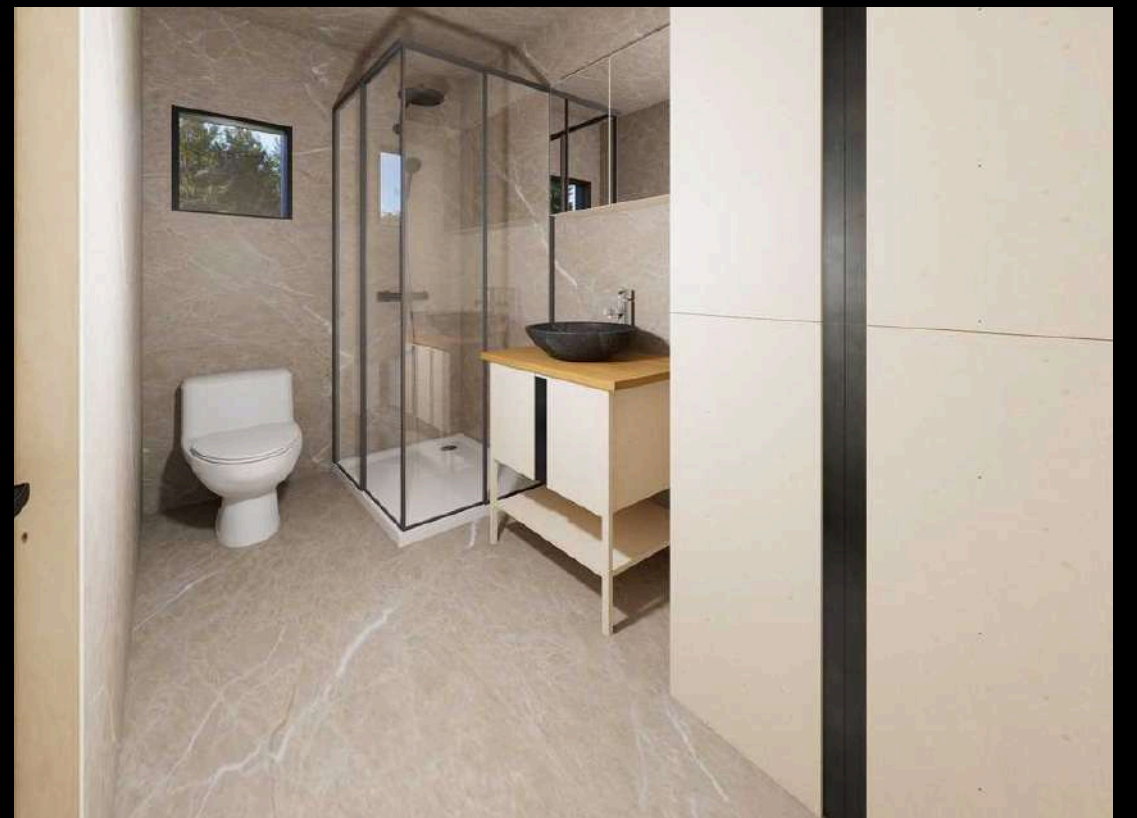
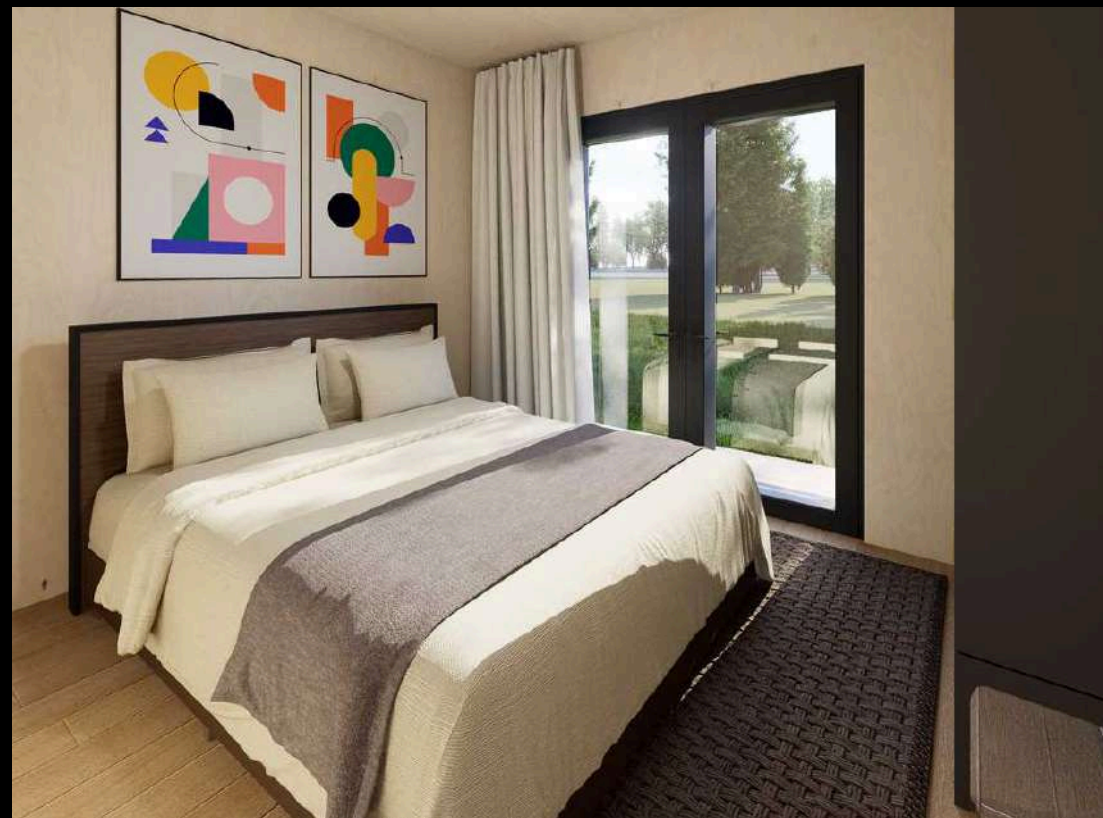
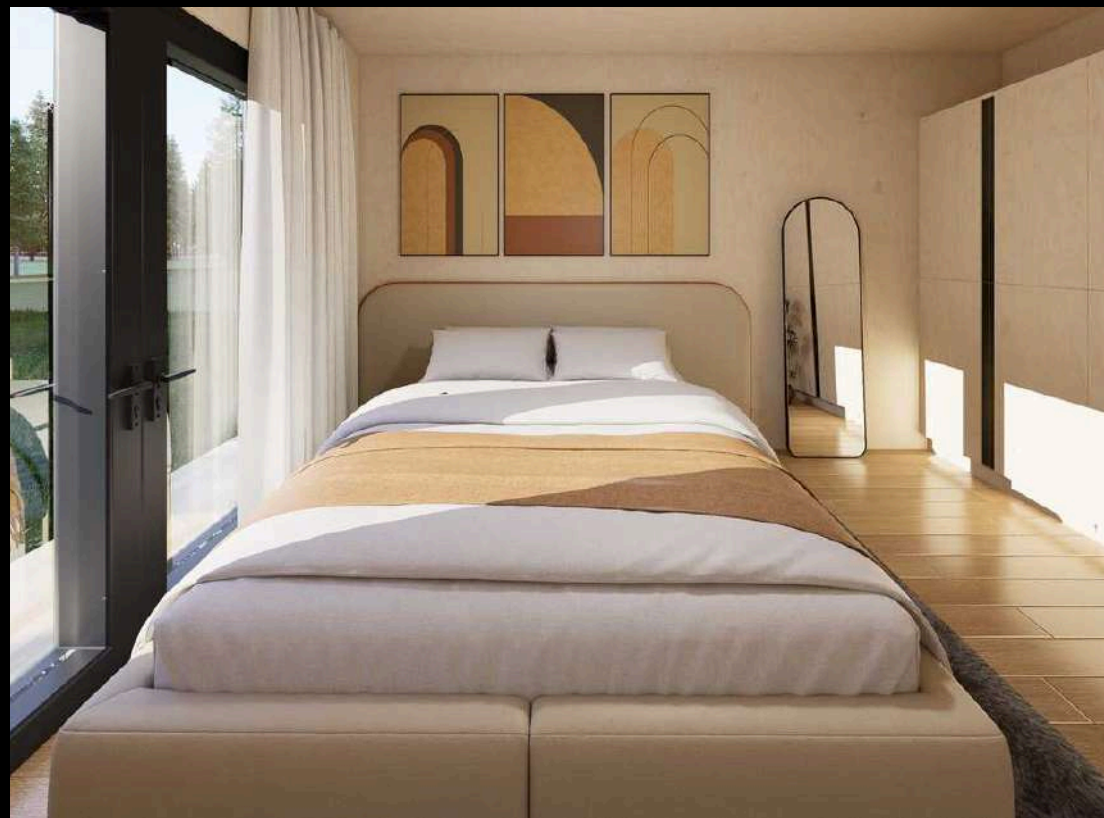


**MB 60 - 2**



**EFFICIENCY**

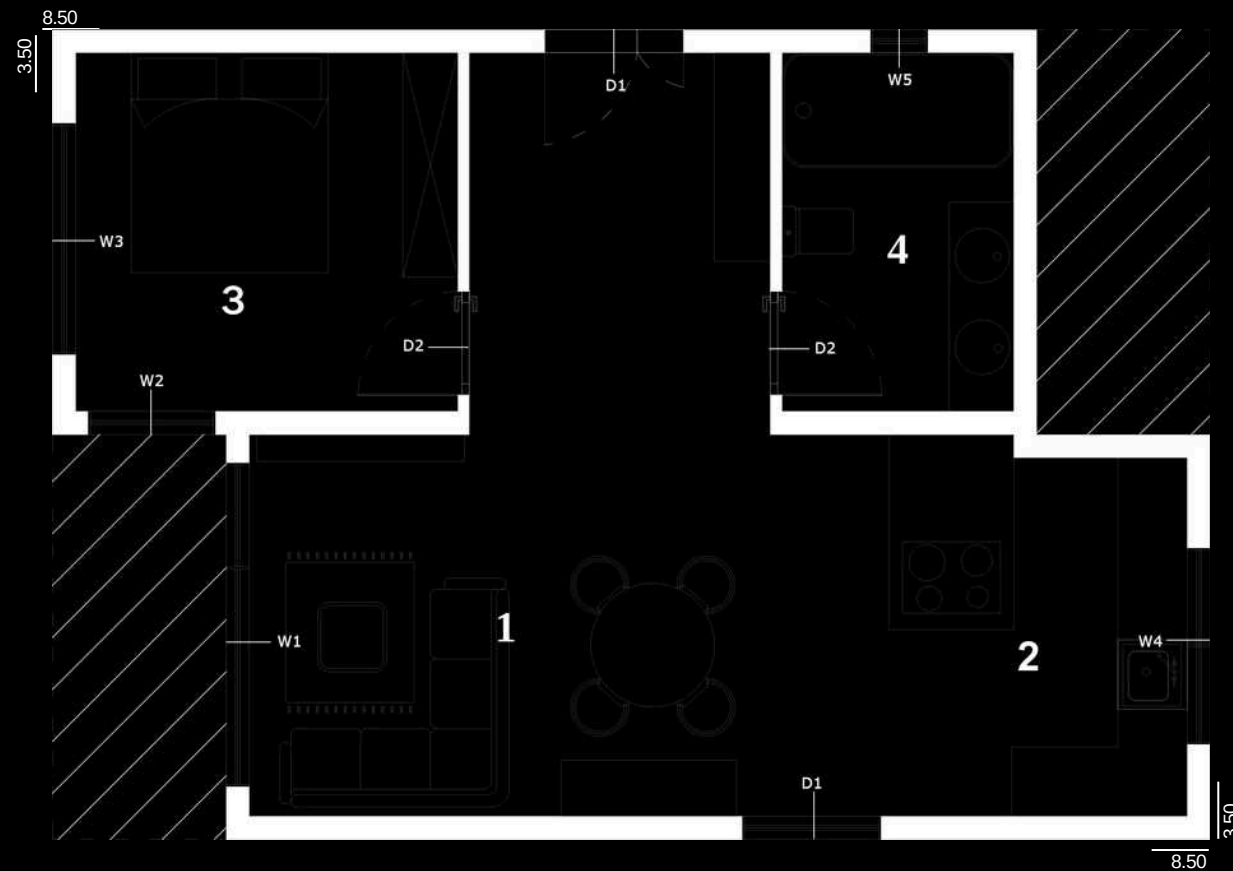
MB Modular House 60-2, Your spacious, sun-drenched living area greets you with a comfortable living room and a practical kitchen corner, inviting you to both relax and work with inspiration. With two private bedrooms promising a peaceful retreat and a spacious bathroom to wash away the day's fatigue, this home prioritizes privacy and comfort. This is not just a floor plan; it is a living space where efficiency, style, and modern comfort are offered in perfect harmony.





**MB 70**

# MB 70



**Total** 70 m<sup>2</sup>

1 Living room 15 m<sup>2</sup>

2 Kitchen 11.5 m<sup>2</sup>

3 Bedroom 10 m<sup>2</sup>

4 Bathroom 6.2 m<sup>2</sup>

Hallway 8.5 m<sup>2</sup>

**Doors** height/width

D1 200/120

D2 200/90

D3 200/80

**Windows**

W1 200/280

W2 200/110

W3 200/200

W4 50/170

W5 50/50



## MB 70

# ELEGANCE

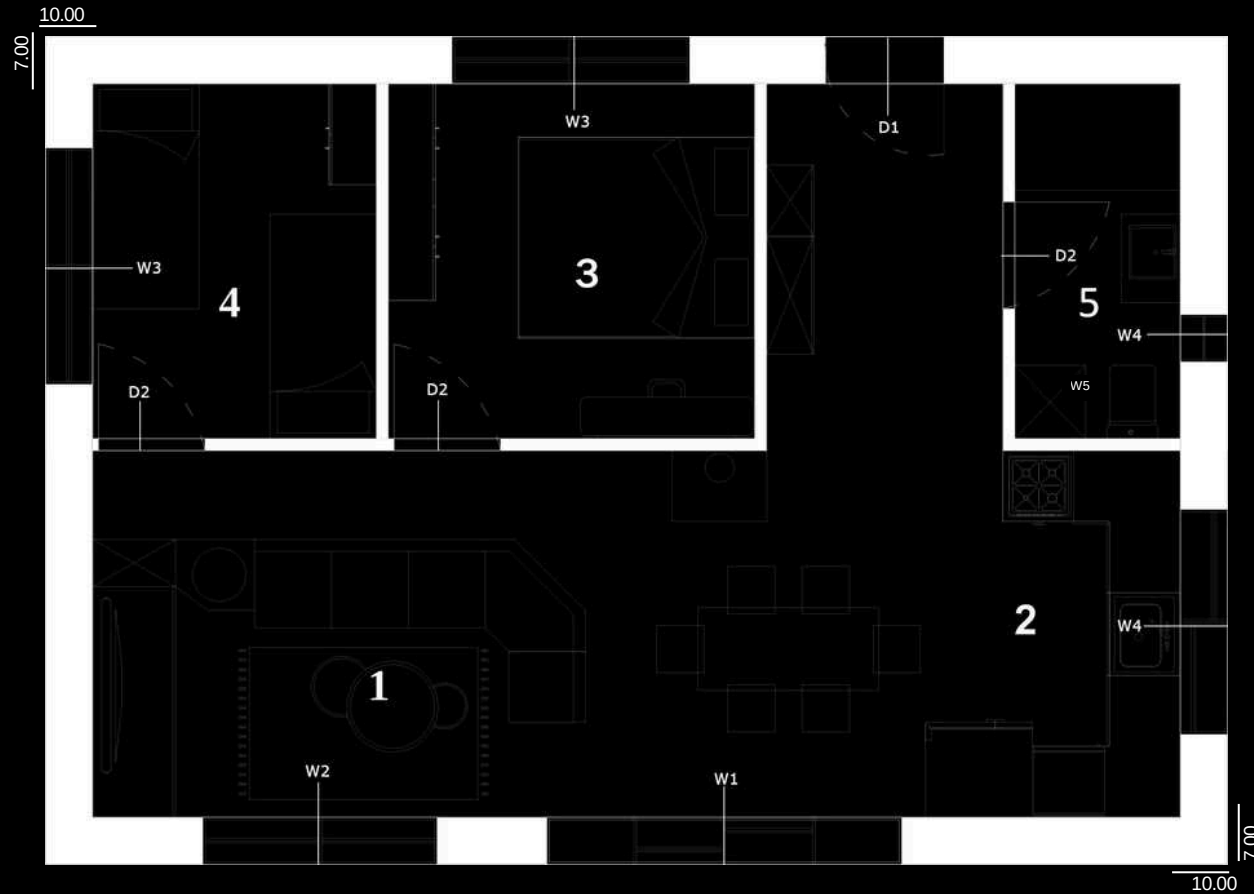
MB Modular House 70, This design brings two different worlds together on a single floor: on one side, a massive, sun-drenched social area perfect for hosting delightful dinners and creating warm moments with your family... On the other, your personal sanctuary, offering absolute tranquility where you can forget the day's fatigue. With its spacious master bedroom and a spa-quality bathroom to indulge in every day, this private wing promises you complete privacy. This is not just a house; it is a design manifesto that offers a perfect balance between social life and personal peace.





**MB 70 - 2**

# MB 70 - 2



<b>Total</b>	<b>70 m<sup>2</sup></b>
1 Living room	17 m <sup>2</sup>
2 Kitchen	11 m <sup>2</sup>
3 Bedroom	9.3 m <sup>2</sup>
4 Bedroom	7.2 m <sup>2</sup>
5 Bathroom	4 m <sup>2</sup>
Hallway	6.2 m <sup>2</sup>
<b>Doors</b>	<b>height/width</b>
D1	200/100
D2	200/90
<b>Windows</b>	
W1	200/300
W2	200/200
W3	120/200
W4	60/190
W5	40/40



## MB 70 - 2



# MODERNITY

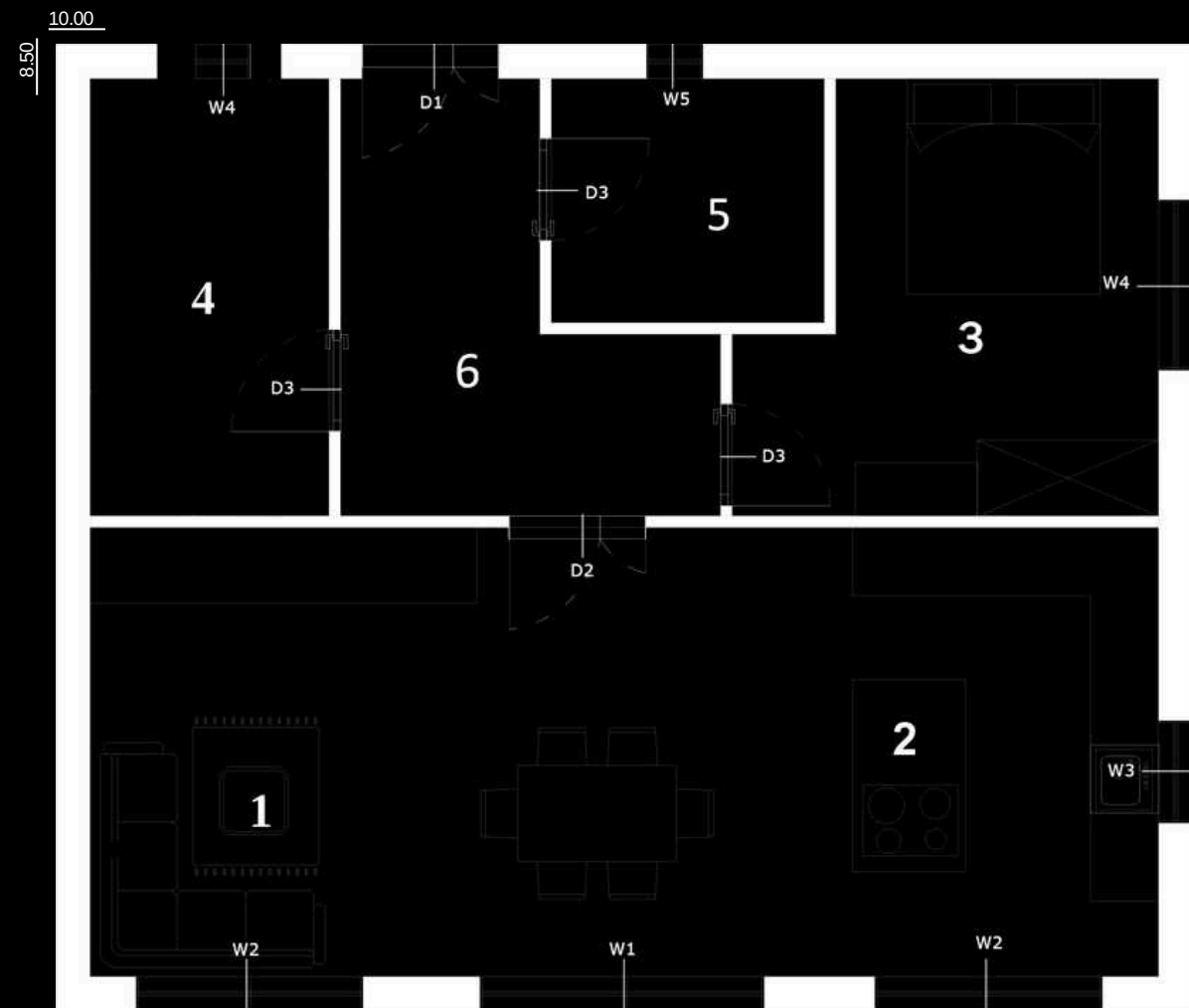
MB Modular House 70-2, This unique design puts you and your loved ones at the center of life. While the spacious and stylish central living area provides the perfect stage for your cherished moments, its doors opening to nature on both facades offer an incredible sense of freedom and openness. As the interior becomes an extension of the outdoors, daylight fills every corner of your home. And at the end of the day, completely isolated from the noise and bustle, your peaceful sanctuary awaits with its two private bedrooms and a comfortable bathroom. This is not just a house; it's a smart and stylish life philosophy where modern comfort intertwines with nature.





**MB 85**

# MB 85



<b>Total</b>	<b>85 m<sup>2</sup></b>
1 Living room	18.5 m <sup>2</sup>
2 Kitchen	18.5 m <sup>2</sup>
3 Bedroom	12.5 m <sup>2</sup>
4 Bedroom	8 m <sup>2</sup>
5 Bathroom	5 m <sup>2</sup>
6 Hallway	9 m <sup>2</sup>

## Doors height/width

D1	200/120
D2	200/120
D3	200/90

## Windows

W1	200/250
W2	200/200
W3	90/50
W4	90/150
W5	50/50

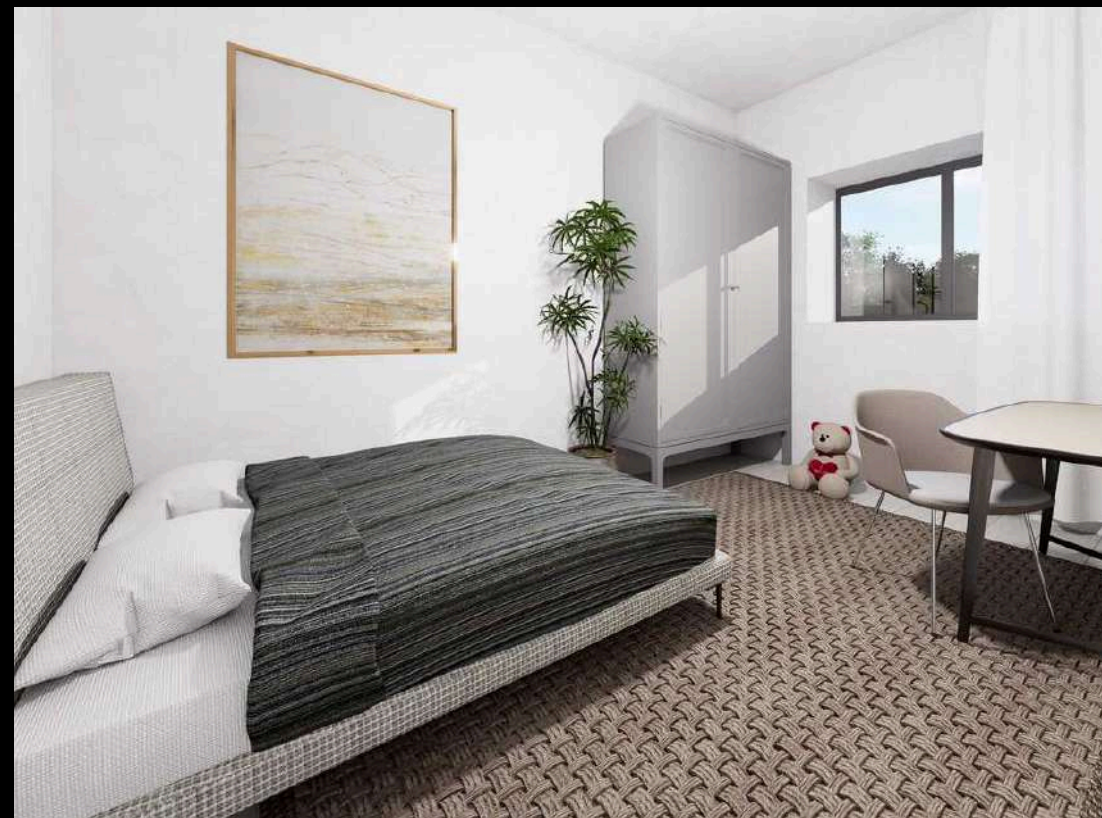


**MB 85**



**PRACTICAL**

MB Modular House 85, This floor plan offers two distinct functions under one roof: a massive social hall that combines the kitchen, dining, and living areas, and a private section with two bedrooms and a bathroom, ensuring complete privacy. Connected to the outdoors through large windows, this home is a practical and modern solution for those seeking both a spacious area for socializing and a peaceful corner for rest.





**MB 98**

# MB 98



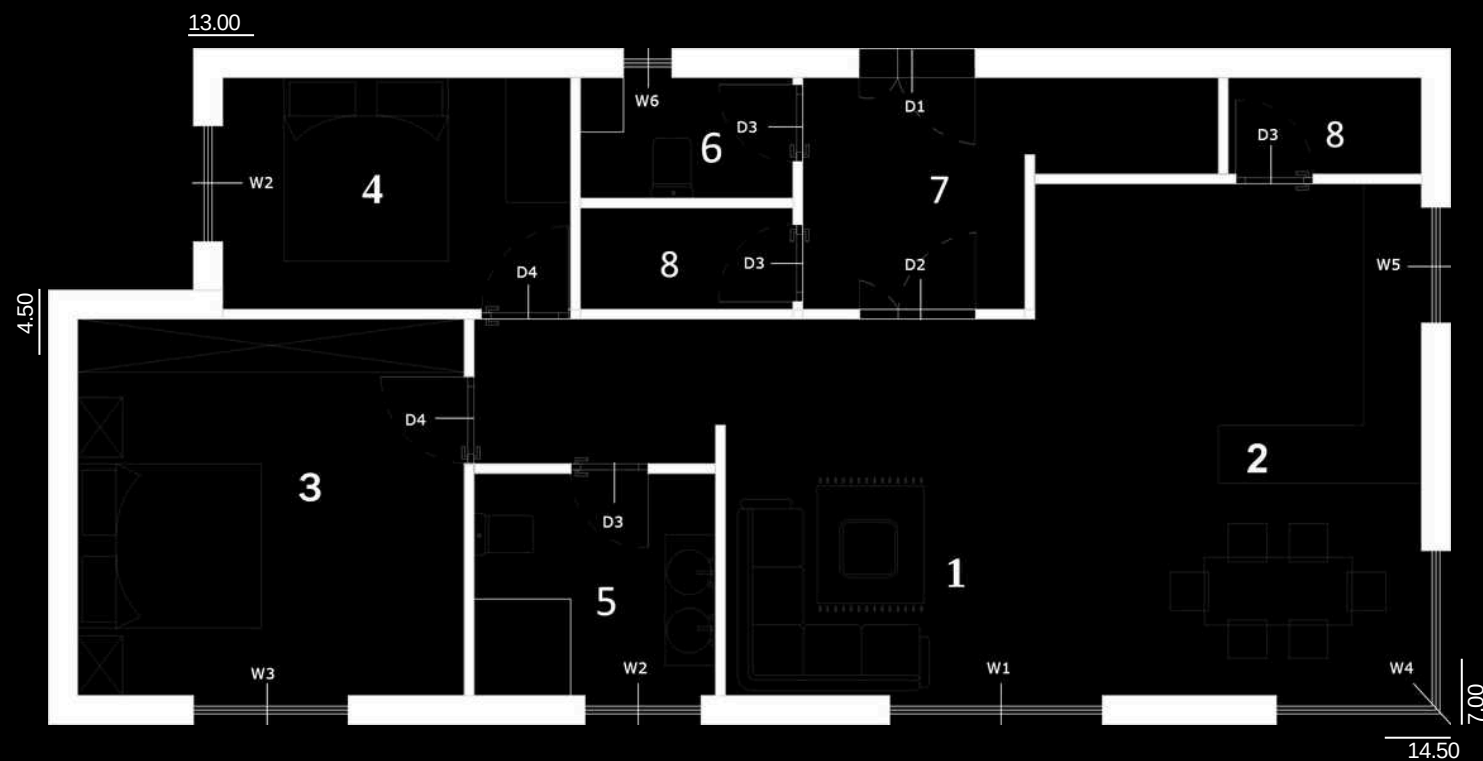
<b>Total</b>	<b>98</b>	<b>m<sup>2</sup></b>
1 Living room	15	m <sup>2</sup>
2 Kitchen	18	m <sup>2</sup>
3 Bedroom	15.5	m <sup>2</sup>
4 Bedroom	8.5	m <sup>2</sup>
5 Bathroom	5.7	m <sup>2</sup>
6 WC	2.7	m <sup>2</sup>
7 Hallway	7.5	m <sup>2</sup>
8 Storage	4	m <sup>2</sup>

## Doors height/width

D1	200/120
D2	200/120
D3	200/80
D4	200/90

## Windows

W1	200/200
W2	90/120
W3	200/160
W4	90/300
W5	60/120
W6	50/50





## MB 98



# PEACEFUL

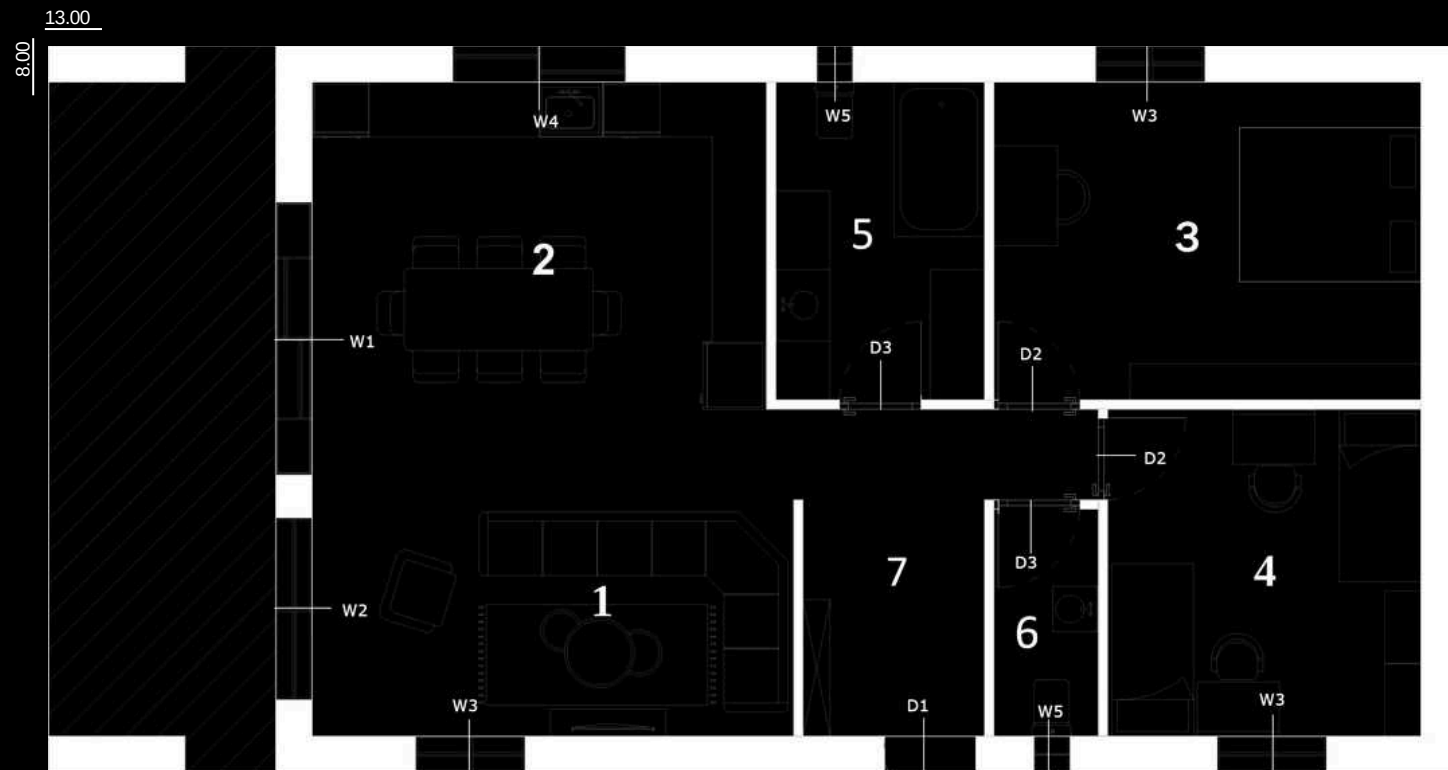
MB Modular House 98, The heart of the home is the vast and bright living area, ready to host your most cherished memories while bringing your loved ones together with its modern kitchen and spacious dining section. One of this home's greatest advantages is the practical storage room, which puts an end to clutter and keeps everything at your fingertips. To unwind from the day's fatigue, two peaceful bedrooms and a stylish main bathroom, easily accessible to everyone, await you. This is more than just a living space; it's a smart design that offers spaciousness, order, and modern comfort all in one.





**MB 104**

# MB 104



**Total** 104 m<sup>2</sup>

1 Living room 18.7 m<sup>2</sup>

2 Kitchen 18 m<sup>2</sup>

3 Bedroom 16.5 m<sup>2</sup>

4 Bedroom 12.4 m<sup>2</sup>

5 Bathroom 8 m<sup>2</sup>

6 WC 2.8 m<sup>2</sup>

7 Hallway 8.8 m<sup>2</sup>

**Doors** height/width

D1 200/100

D2 200/90

D3 200/80

**Windows**

W1 200/300

W2 120/200

W3 90/120

W4 60/190

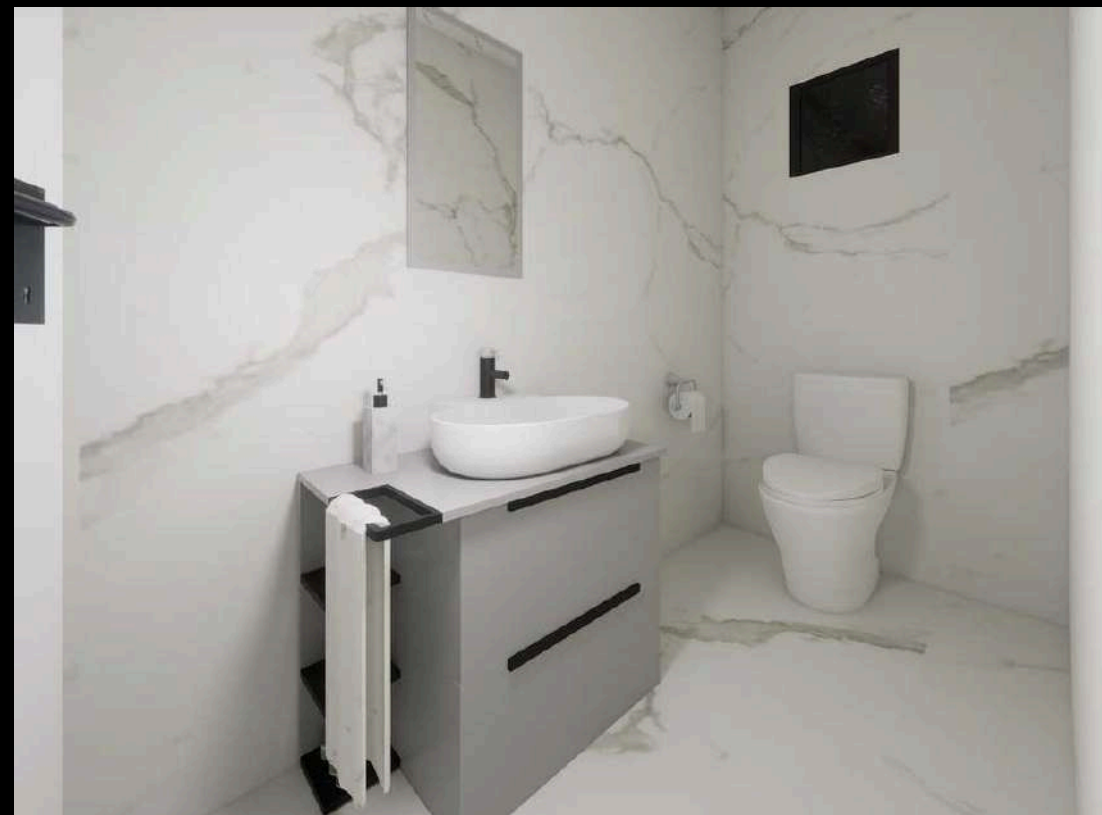
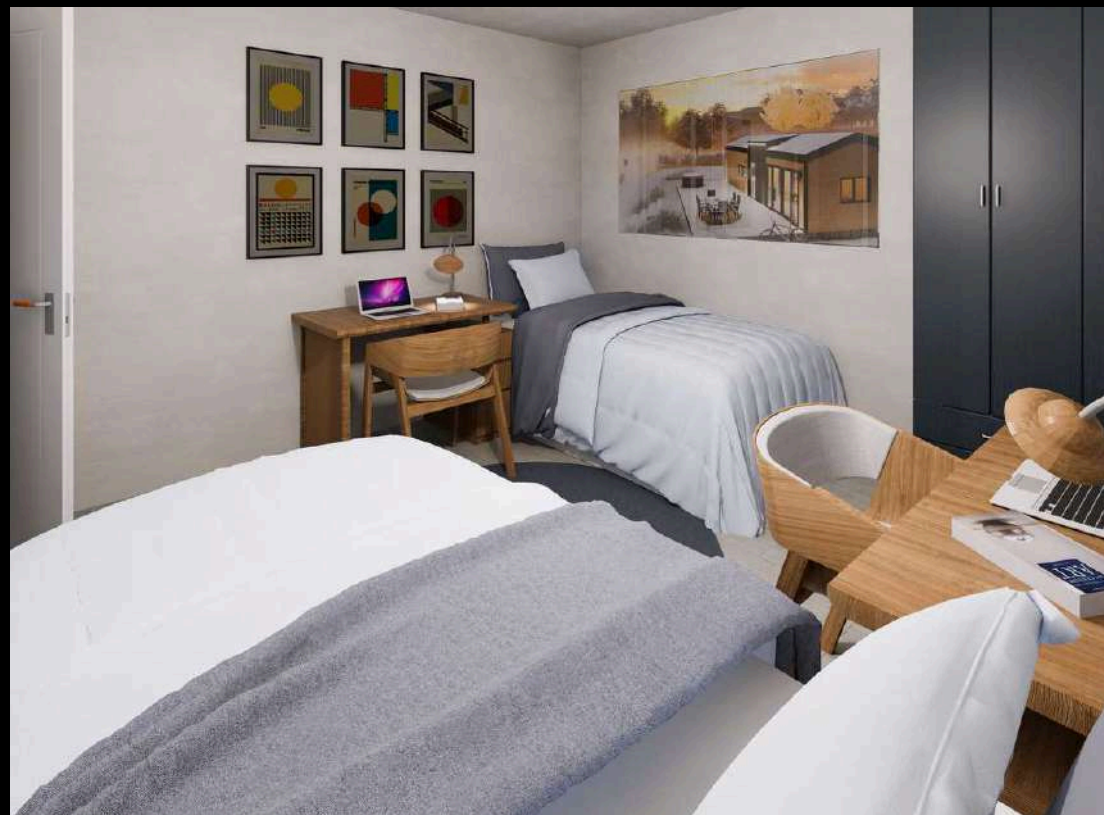
W5 40/40



## MB 104

MB Modular House 104, Welcome to this smartly designed home, where everyone has their own private corner! At the heart of the home, a spacious living area awaits, ready to become the center of your pleasant conversations and family moments. On one side, you'll find your master bedroom offering a peaceful retreat, and on the other, a second room designed for your child or guests. One of the home's most practical solutions is the separate toilet, providing great convenience for your guests in addition to the main bathroom. This is more than just a house; it's a smart living space that combines comfort, practicality, and modern living within a compact area.

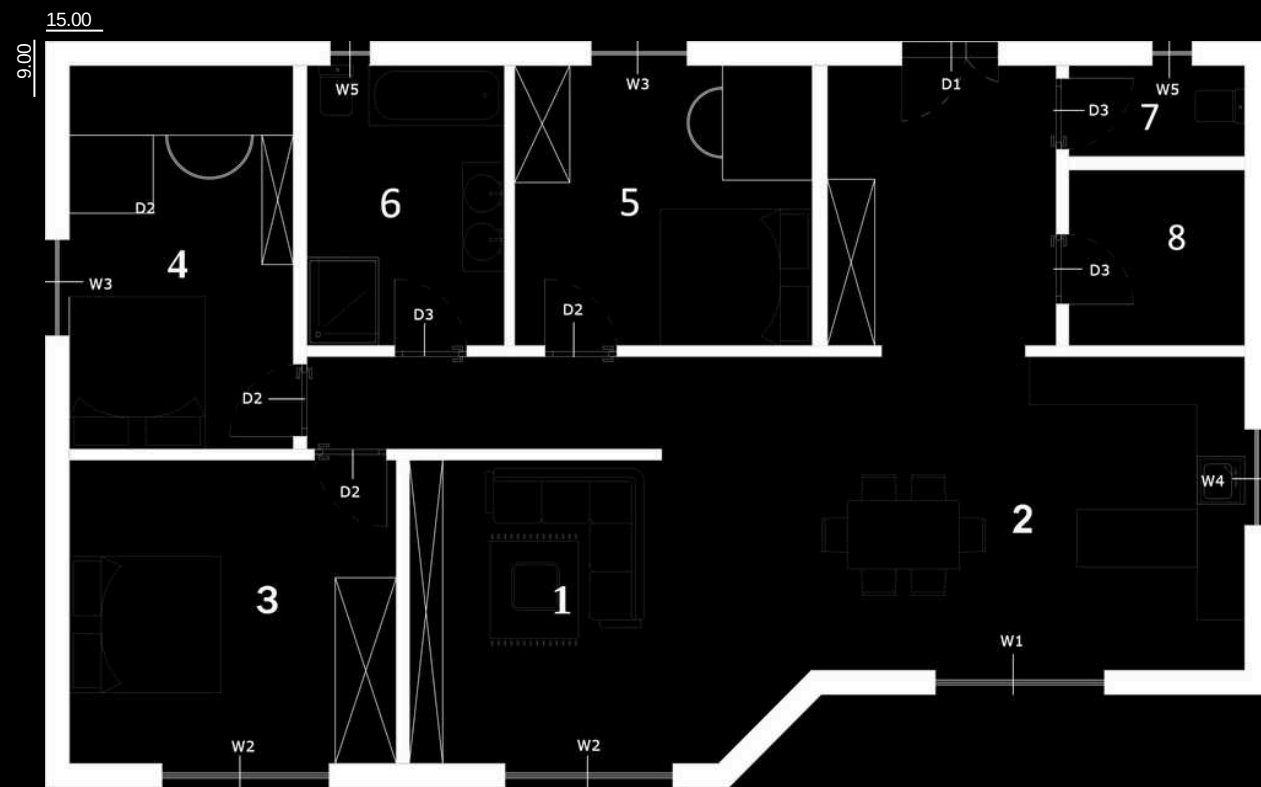
# DETAILS





**MB 135**

# MB 135



<b>Total</b>	<b>135</b>	<b>m<sup>2</sup></b>
1 Living room	18	m <sup>2</sup>
2 Kitchen	21	m <sup>2</sup>
3 Bedroom	15.5	m <sup>2</sup>
4 Bedroom	13.4	m <sup>2</sup>
5 Bedroom	13	m <sup>2</sup>
6 Bathroom	8.6	m <sup>2</sup>
7 WC	2.5	m <sup>2</sup>
8 Storage	4.8	m <sup>2</sup>

## Doors height/width

D1	200/120
D2	200/90
D3	200/80

## Windows

W1	200/200
W2	200/160
W3	90/120
W4	60/120
W5	50/50



## MB 135



# PRESTIGE

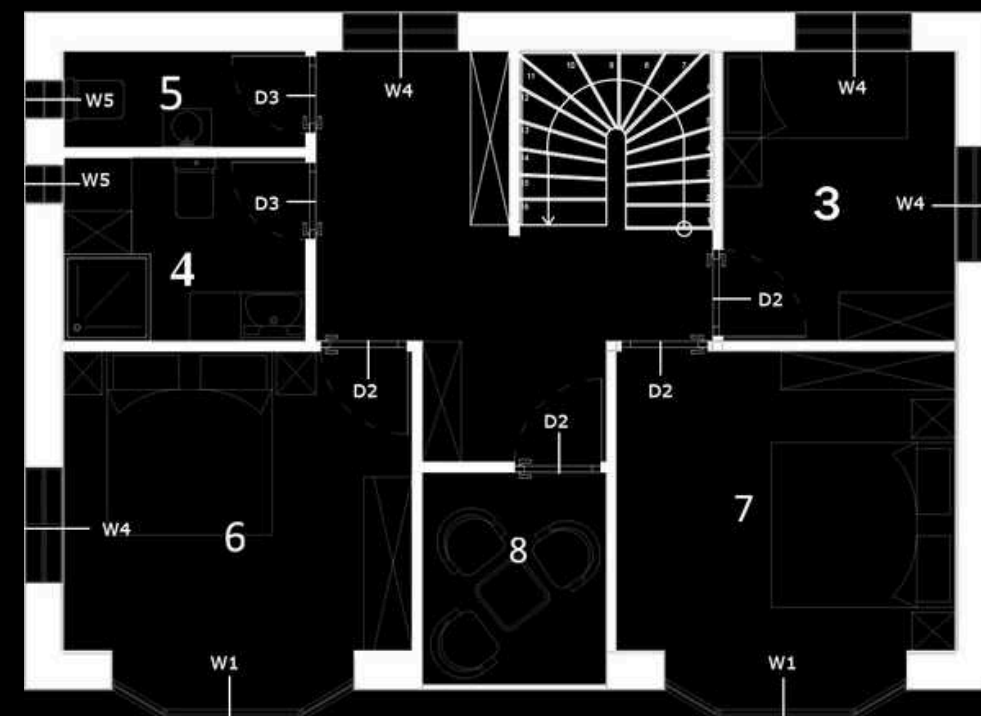
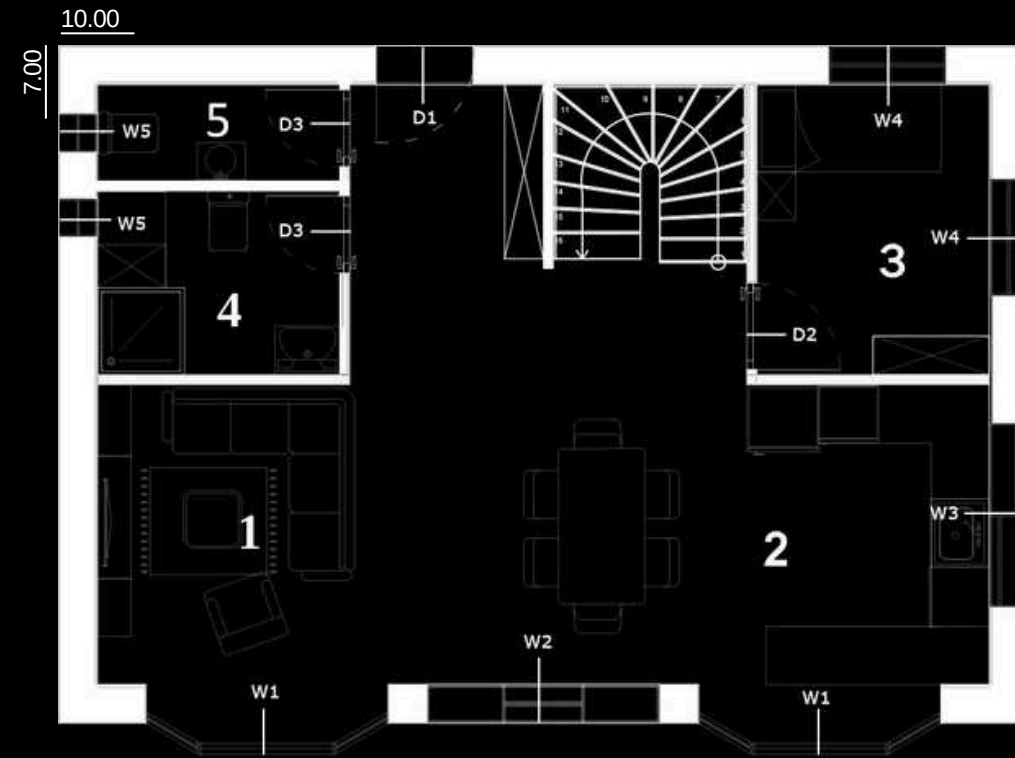
MB Modular House 135, The heart of your home is the bright living room, ready to host even your largest gatherings. Your exclusive master suite offers a personal sanctuary where you can enjoy privacy and luxury, complete with its own private bathroom. For other family members or your guests, there are two separate bedrooms, a second stylish bathroom designed for shared use, a separate toilet for your guests, and a dedicated laundry room that makes life easier. This is not just a building; it's a perfect combination of comfort, prestige, and functionality, thoughtfully designed to meet every need of the modern family down to the finest detail.





**MB 140**

# MB 140



**Total** 140 m<sup>2</sup>

1 Living room 21 m<sup>2</sup>

2 Kitchen 8 m<sup>2</sup>

3 Bedroom 7.2 m<sup>2</sup>

4 Bathroom 4.7 m<sup>2</sup>

5 WC 2.5 m<sup>2</sup>

6 Bedroom 12 m<sup>2</sup>

7 Bedroom 12 m<sup>2</sup>

8 Balcony 4 m<sup>2</sup>

**Doors** height/width

D1 200/100

D2 200/90

D3 200/80

**Windows**

W1 250/150

W2 240/200

W3 60/190

W4 90/120

W5 40/40



## MB 140

# QUALITY

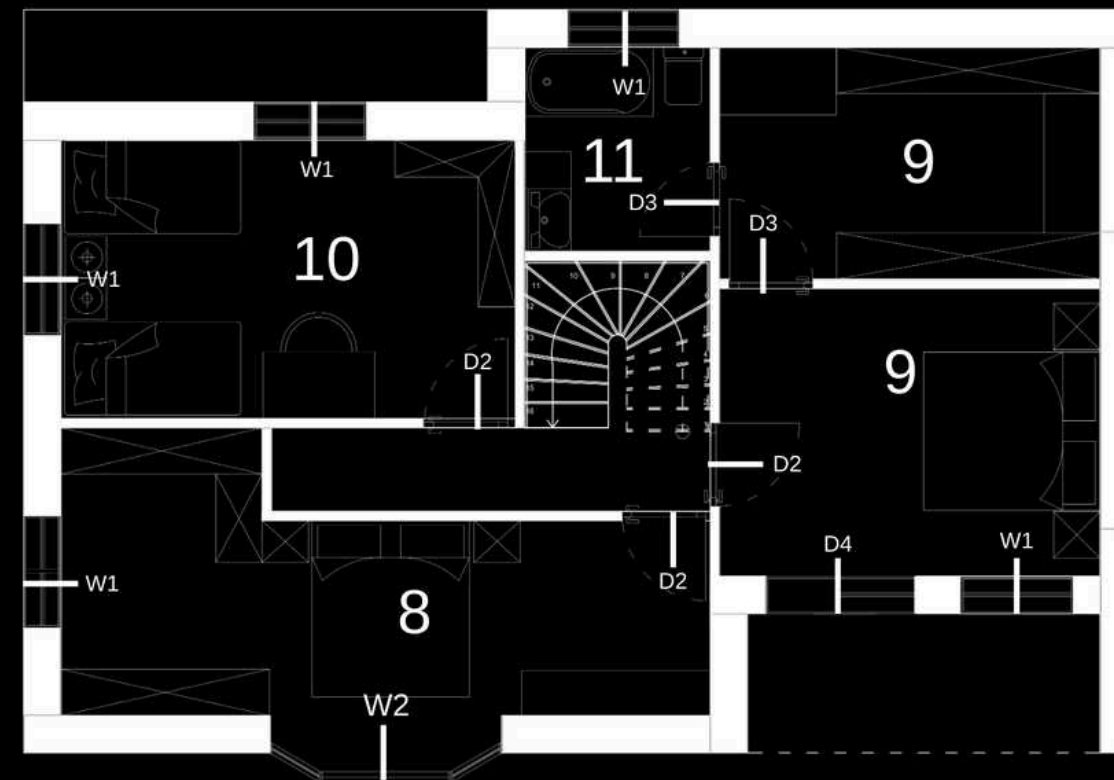
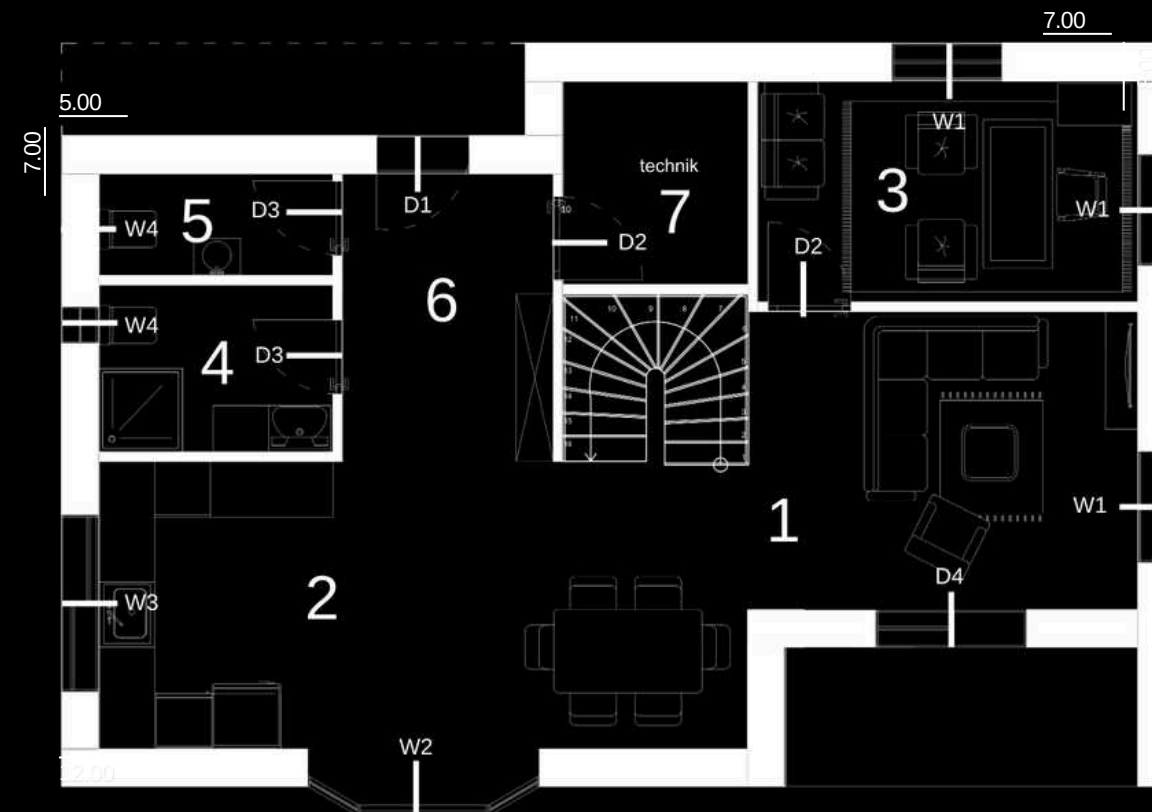
MB Modular House 140, This functional two-story family home perfectly separates the living spaces: the ground floor features a spacious, open-concept social area along with a guest room, while the upper floor is a private retreat with three bedrooms and a large bathroom. With a total of four rooms and two bathrooms, this design is ideal for families seeking both generous common areas and complete privacy.





**MB 192**

# MB 192



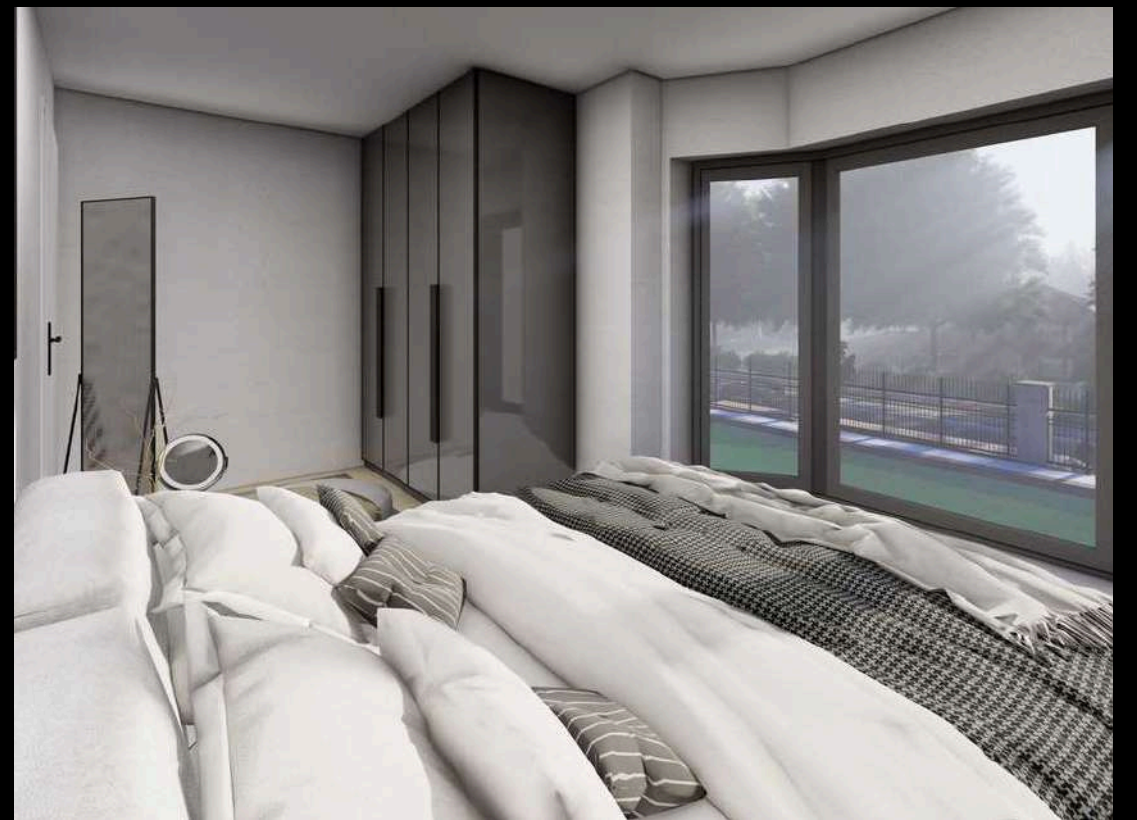
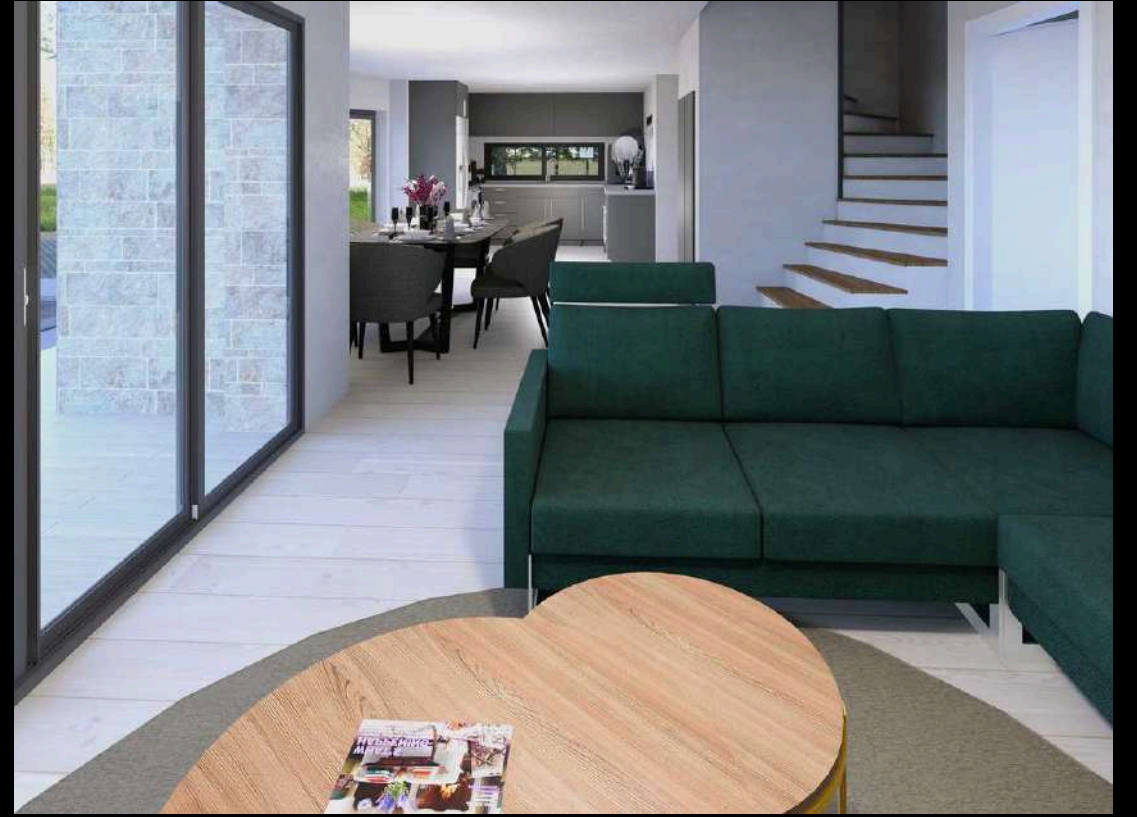
<b>Total</b>	<b>192 m<sup>2</sup></b>
1 Living room	20 m <sup>2</sup>
2 Kitchen	15 m <sup>2</sup>
3 Office	9.7 m <sup>2</sup>
4 Bathroom	4.5 m <sup>2</sup>
5 WC	2.7 m <sup>2</sup>
6 Hallway	7 m <sup>2</sup>
7 Technik	4.4 m <sup>2</sup>
8 Bedroom	17 m <sup>2</sup>
9 Bedroom	22.9 m <sup>2</sup>
10 Bedroom	14.7 m <sup>2</sup>
11 Bedroom	4.3 m <sup>2</sup>
Balcony	5.7 m <sup>2</sup>
<b>Doors</b>	<b>height/width</b>
D1	200/100
D2	200/90
D3	200/80
D4	200/160
<b>Windows</b>	
W1	90/120
W2	200/250
W3	60/190
W4	40/40



**MB 192**

**SPACIOUSNESS**

MB Modular House 192, This exceptional MB Modular House complex provides a spacious and luxurious interior living area through the intelligent combination of two modules. The layout brings together a private sleeping module containing a total of three spacious bedrooms (two of which are ensuite) with the social heart of the home: the bright, open-plan living, dining, and modern kitchen areas. Prioritizing high comfort and privacy, this arrangement is ideal for large families. Combining architectural intelligence with functionality and luxury, this complex is a turn-key solution.





**MB 195**

# MB 195



<b>Total</b>	<b>195</b>	<b>m<sup>2</sup></b>
1 Living room	23	m <sup>2</sup>
2 Kitchen	26.8	m <sup>2</sup>
3 Bedroom	17	m <sup>2</sup>
4 Bedroom	16	m <sup>2</sup>
5 Bedroom	16.5	m <sup>2</sup>
6 Bathroom	6.7	m <sup>2</sup>
7 Bathroom	6.7	m <sup>2</sup>
8 Enterance	13	m <sup>2</sup>
9 Storage room	13	m <sup>2</sup>

## Doors height/width

D1	200/100
D2	200/90
D3	200/80
D4	200/400

## Windows

W1	200/280
W2	200/50
W3	90/120
W4	60/120
W5	50/50





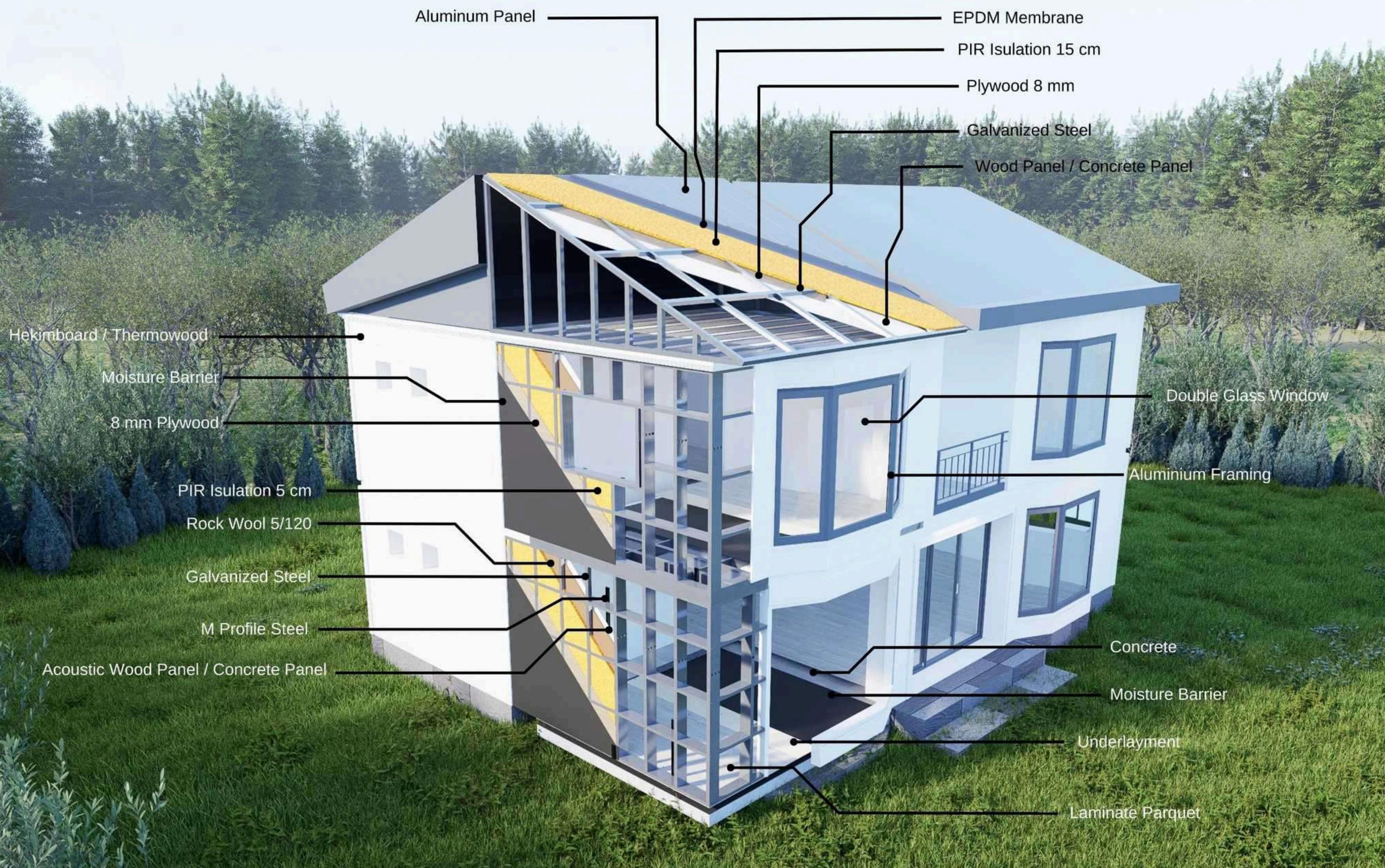
**MB 195**



**INTEGRATED**

MB Modular House 195, The spacious living area, supported by a practical central kitchen, a comfortable sitting nook, and a stylish bathroom, maximizes privacy thanks to two separate sleeping areas located at opposite ends of the home. Whether used as a flexible guest suite or a workspace, the interior comfort provided by the 195 m<sup>2</sup> space is a turn-key solution for those seeking a stylish and spacious life.





Aluminum Panel

EPDM Membrane

PIR Isulation 15 cm

Plywood 8 mm

Galvanized Steel

Wood Panel / Concrete Panel

Hekimboard / Thermowood

Moisture Barrier

8 mm Plywood

PIR Isulation 5 cm

Rock Wool 5/120

Galvanized Steel

M Profile Steel

Acoustic Wood Panel / Concrete Panel

Double Glass Window

Aluminium Framing

Concrete

Moisture Barrier

Underlayment

Laminate Parquet

L a y e r s



Fiber cement or/and Thermowood

Aluminum Composite

EPDM Membrane

PIR Insulation 15 cm

Rock Wool 5/120

Rock Wool 5/120

OSB

Fiber cement or/and Cladding Panels

Moisture Barrier

OSB

Galvanized Steel

PIR Insulation 5 cm

Laminate Parquet

Underlayment

Double Glass Window

Aluminum Framing

Rock Wool 5/120

Rock Wool 5/120

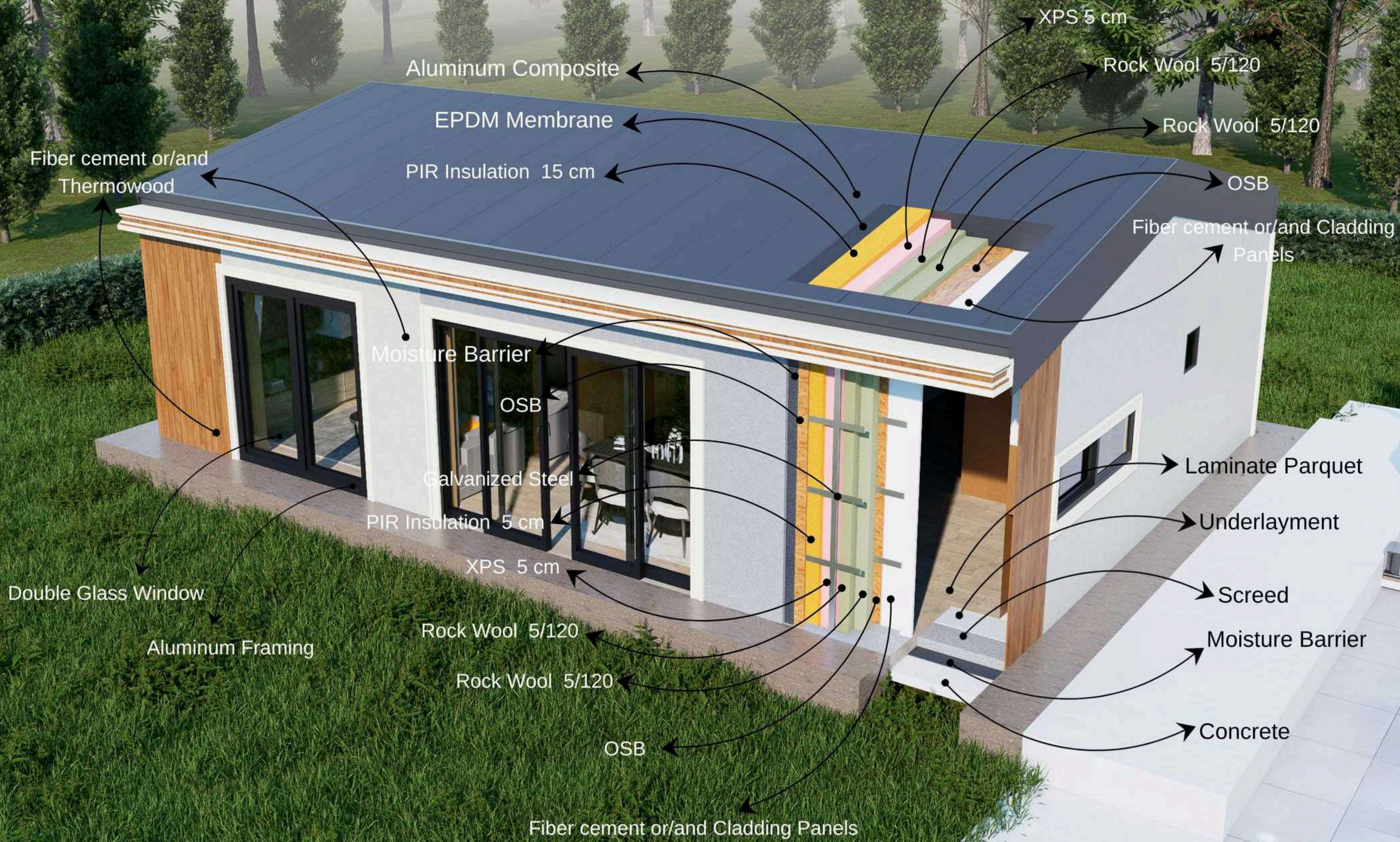
Screed

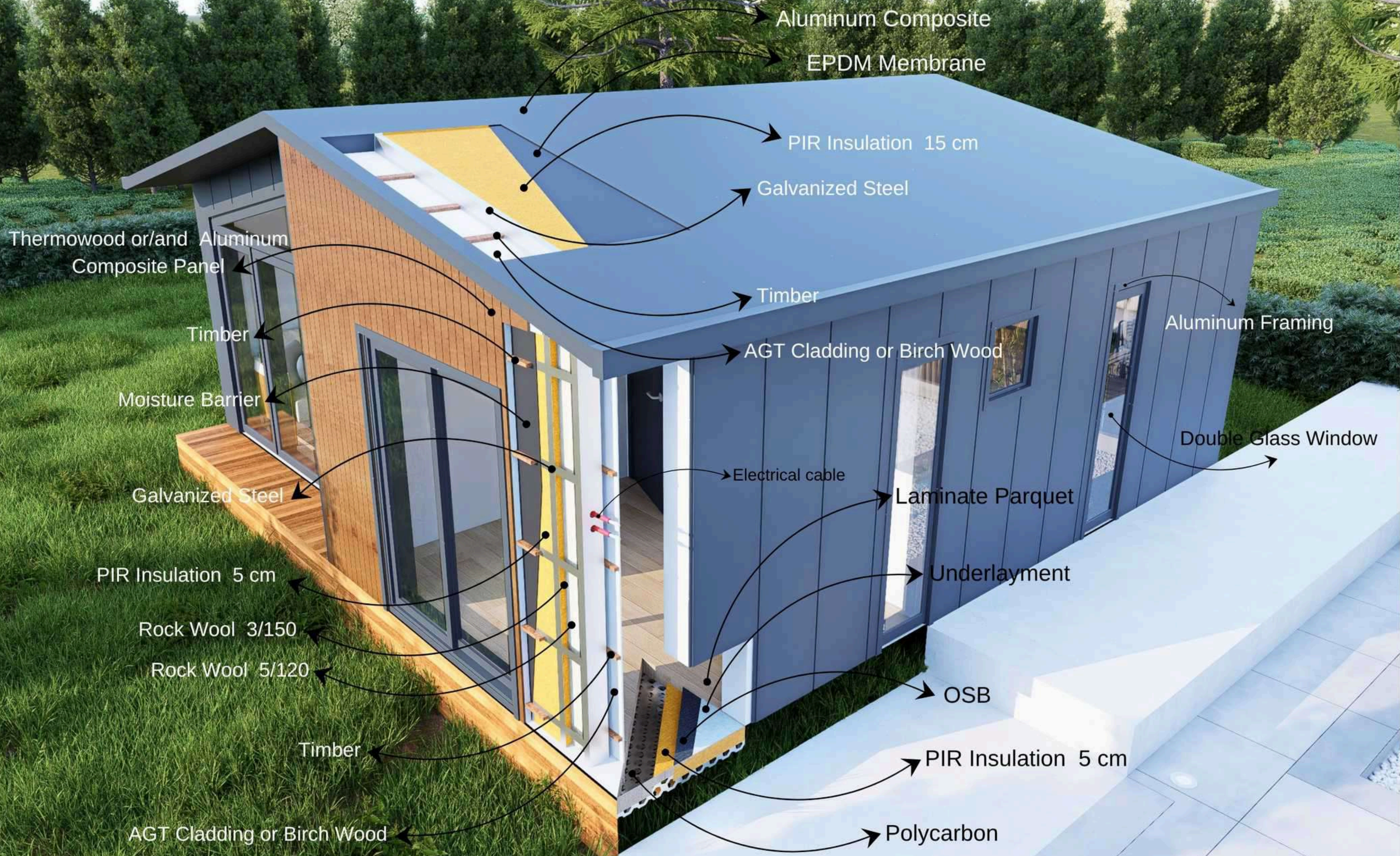
Moisture Barrier

OSB

Concrete

Fiber cement or/and Cladding Panels







# MB WORLD GROUP

☎ +90 538 774 03 53

✉ sales@mbtinyhouse.com

🌐 www.mbtinyhouse.com